



PARK PLAZA

NUREMBERG

*Reassuringly Good
Meetings & Events*

Ideal meetings and events venue for up to 70 delegates.

WE OFFER A WELL-CONNECTED VENUE THAT FEATURES 1 EVENT LOCATION AND 8 FLEXIBLE, STATE-OF-THE-ART MEETING ROOMS WITH PARTIAL NATURAL DAYLIGHT



18 mins

TO AIRPORT

1 min

TO STATION

Sightseeing

KAISERBURG,
LORENZKIRCHE,
HANDWERKERHOF



8

FLEXIBLE
MEETING
ROOMS

310 m²

MEETING
SPACE

86

GUEST
CAPACITY



GREEN KEY
CERTIFIED
MEETINGS



FULL
AV CAPABILITIES

Smart Tech

IN EVERY
MEETING ROOM



177

GUEST
ROOMS

1

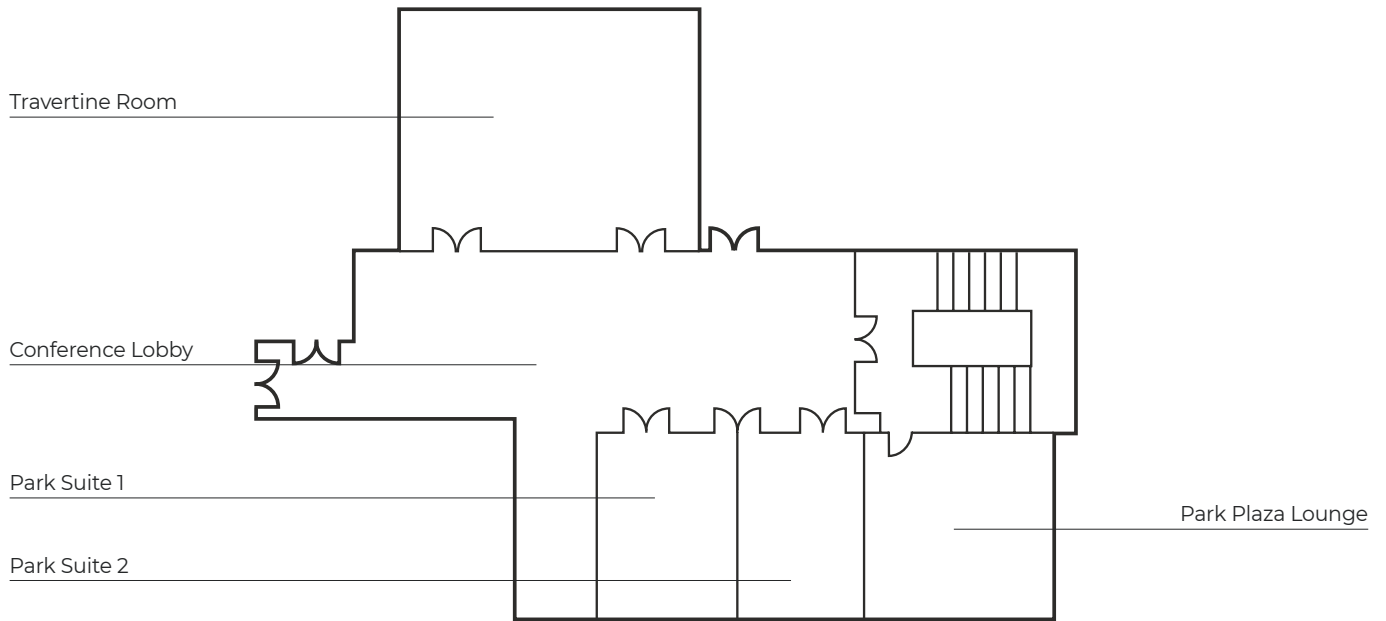
RESTAURANT
& BAR

1

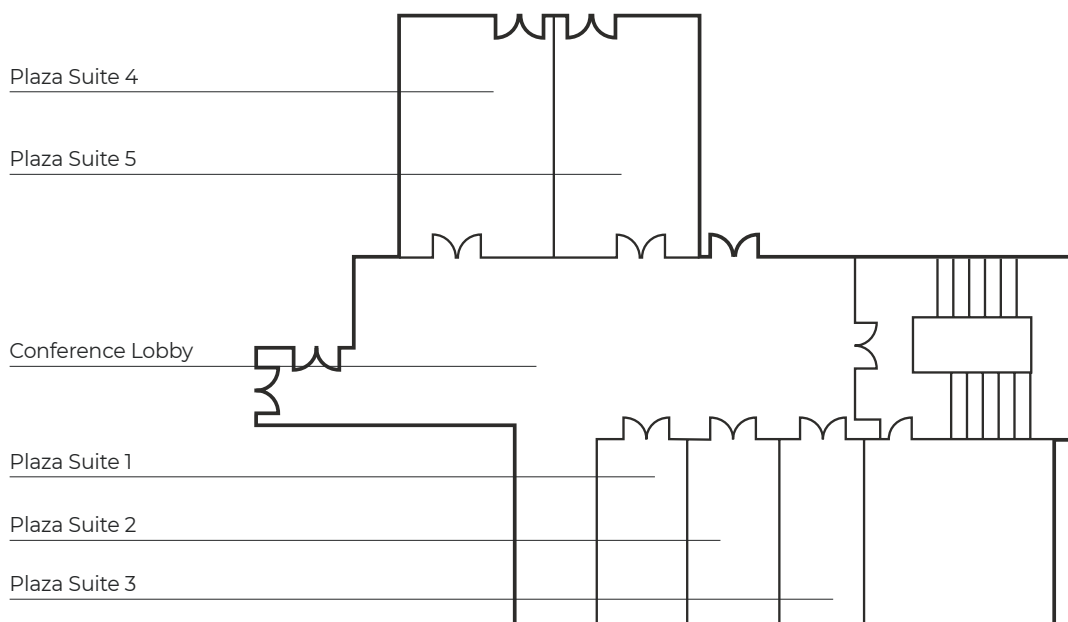
GYM & SAUNA

Floor Plans

Park Suites



Plaza Suites



Capacities

ROOM NAME	DIMENSION W X L X H	SIZE (M ²)	THEATRE	BOARD ROOM	U- SHAPE	CLASS ROOM	CABARET DINNER	DINNER DANCE	RECEP- TION
PARK SUITES - GROUND FLOOR									
Park Suite 1	6.75 x 6.51 x 3.0	45	32	16	17	20			32
Park Suite 2	6.52 x 6.51 x 3.0	45	32	16	17	20			32
Park Suite 1+2	13.35 x 6.81 x 3.0	90	76	32	25	50			64
Conference Lobby		90							0
Park Plaza Lounge	7.48 x 7.12 x 3.0	54	50		15	16		41	
PLAZA SUITES - LOWER GROUND FLOOR									
Plaza Suite 1	3.56 x 6.96 x 3.0	25	16	12	15	13	13		16
Plaza Suite 2	3.56 x 6.96 x 3.0	25	16	12	15	13	13		16
Plaza Suite 3	3.14 x 6.76 x 3.0	22	12	12					
Plaza Suite 4	5.19 x 8.95 x 3.0	47	35	20	20	25	25		35
Plaza Suite 5	5.16 x 8.95 x 3.0	47	35	20	20	25	25		35
Plaza Suite 4+5	10.49 x 8.95 x 3.0	94	86	32	27	50	48		70
Conference Lobby		100							





PARK SUITE 1



EXTERIOR



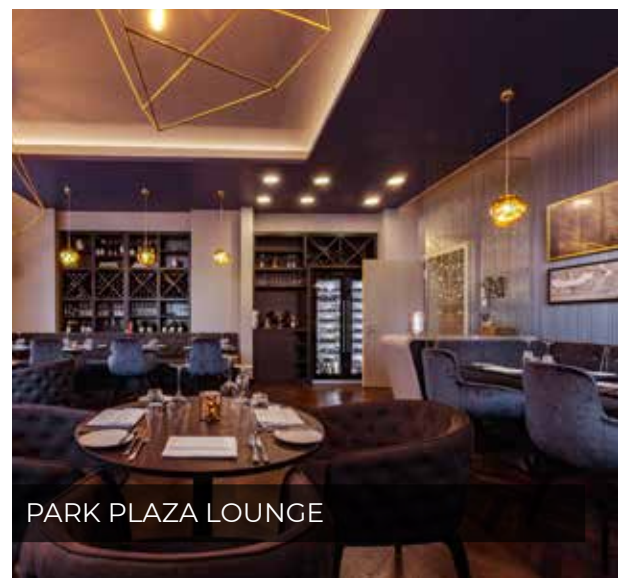
PARK SUITE 1 & 2



RESTAURANT TRAVERTINE



177 GUEST ROOMS



PARK PLAZA LOUNGE

NEED A QUOTE?

Our experienced sales team would be delighted to send you a customised proposal. Please contact us on: ppnuconf@parkplazagermany.com or +49 30 400 55 77 60

parkplaza.com

[f](#) [X](#) [@](#)parkplaza