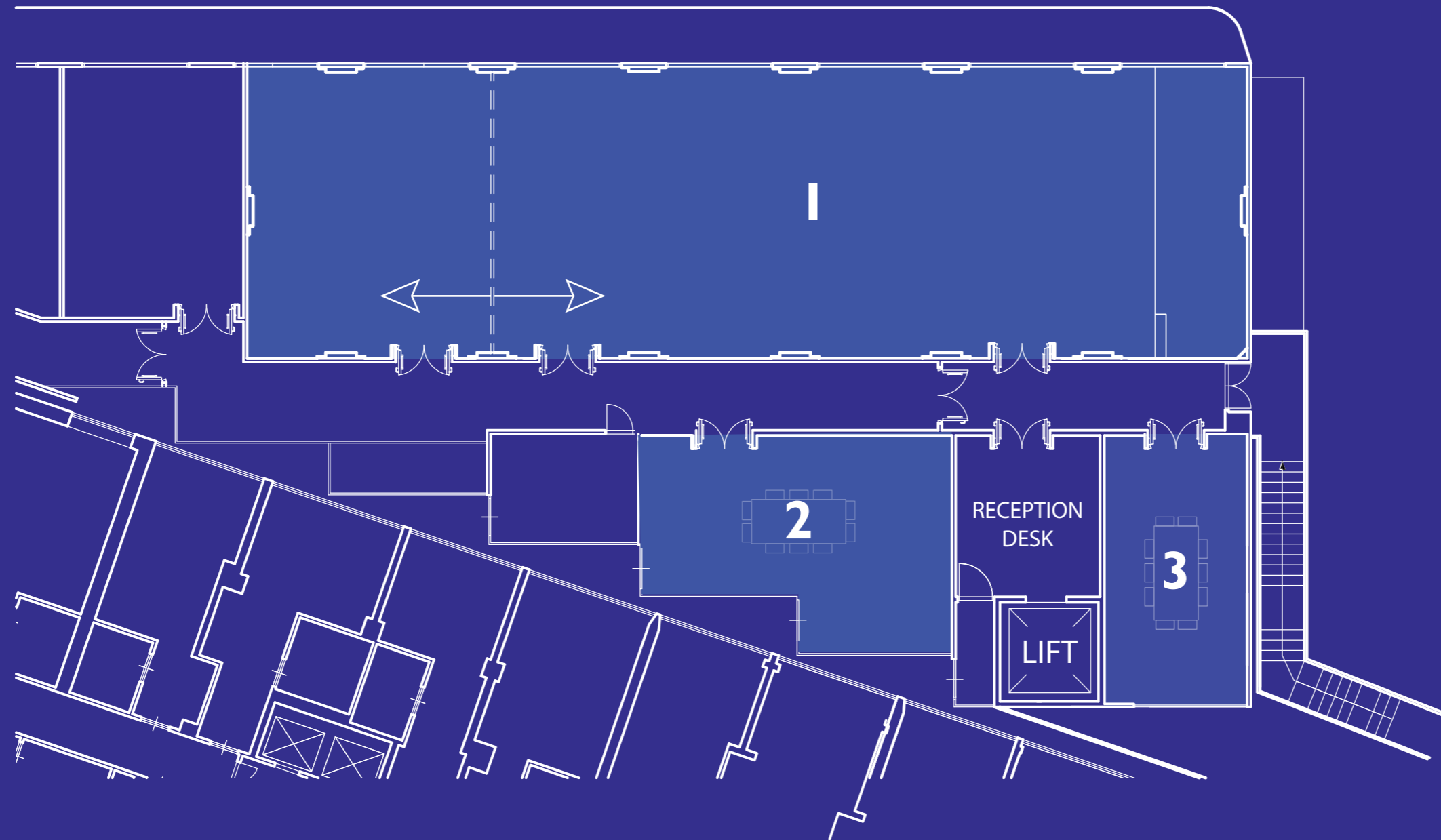


FIRST FLOOR



1 - CIVININI ROOM

166 mq / 1790 sft  
up to 200 p.

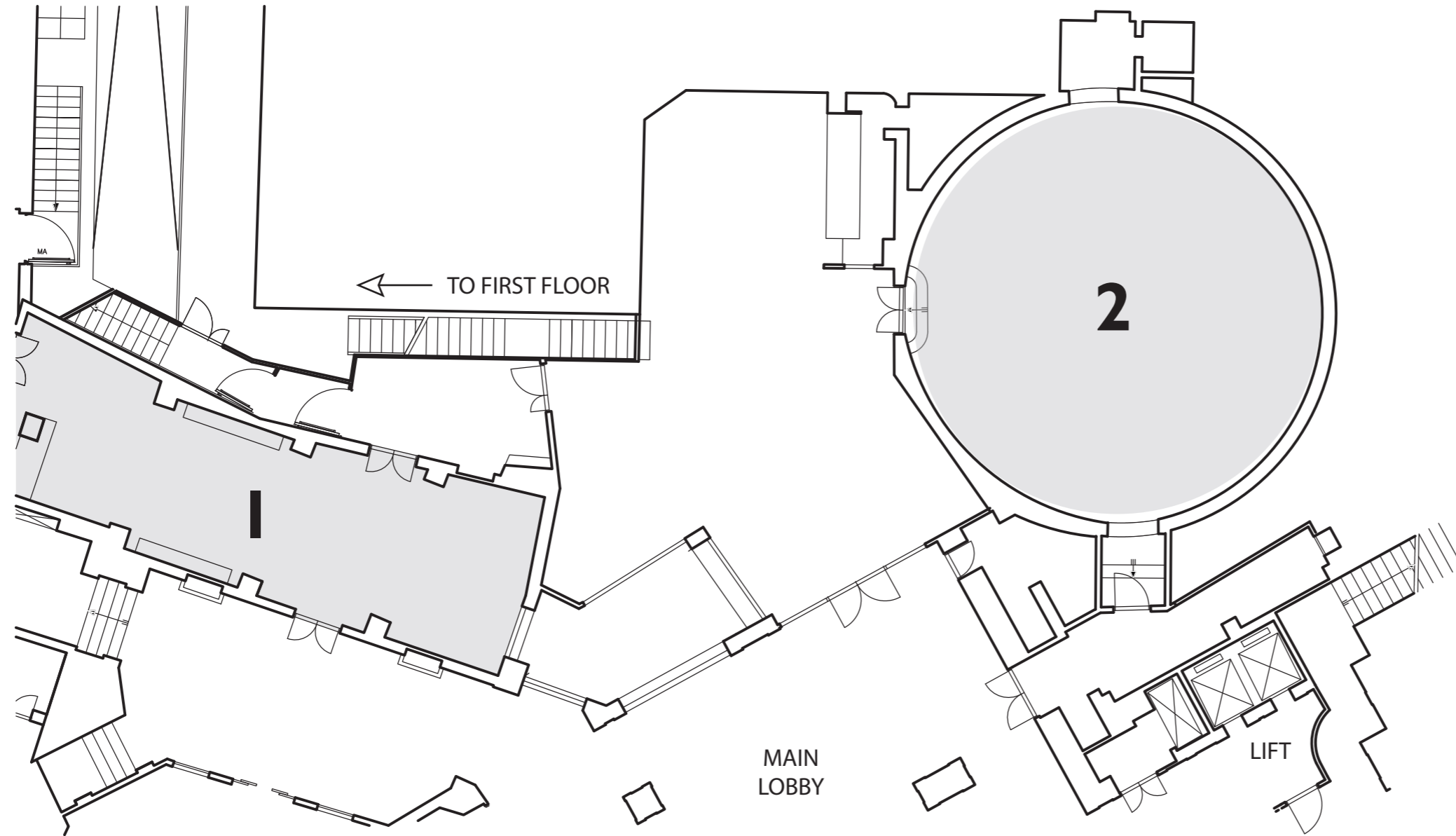
2 - EUCLIDE ROOM

21 mq / 413 sft  
up to 25 p.

3 - PLANA ROOM

38 mq / 226 sft  
up to 20 p.

# GROUND FLOOR

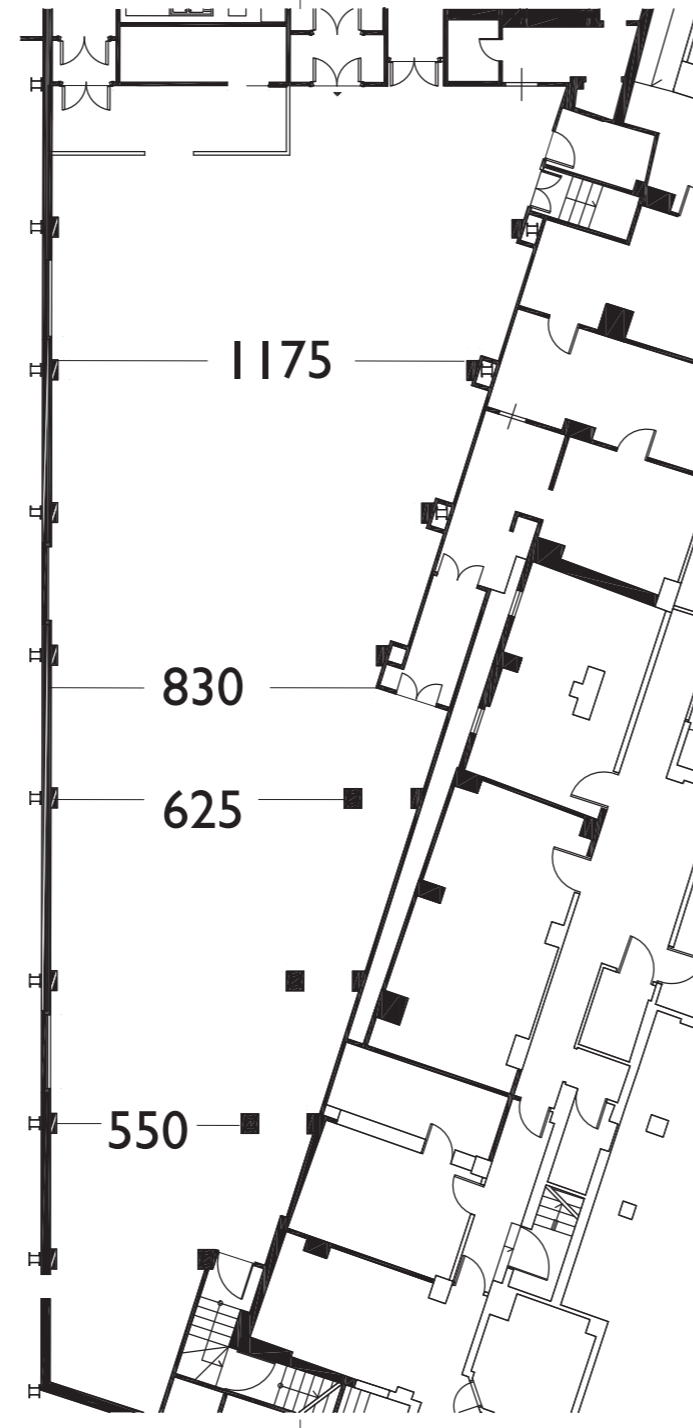
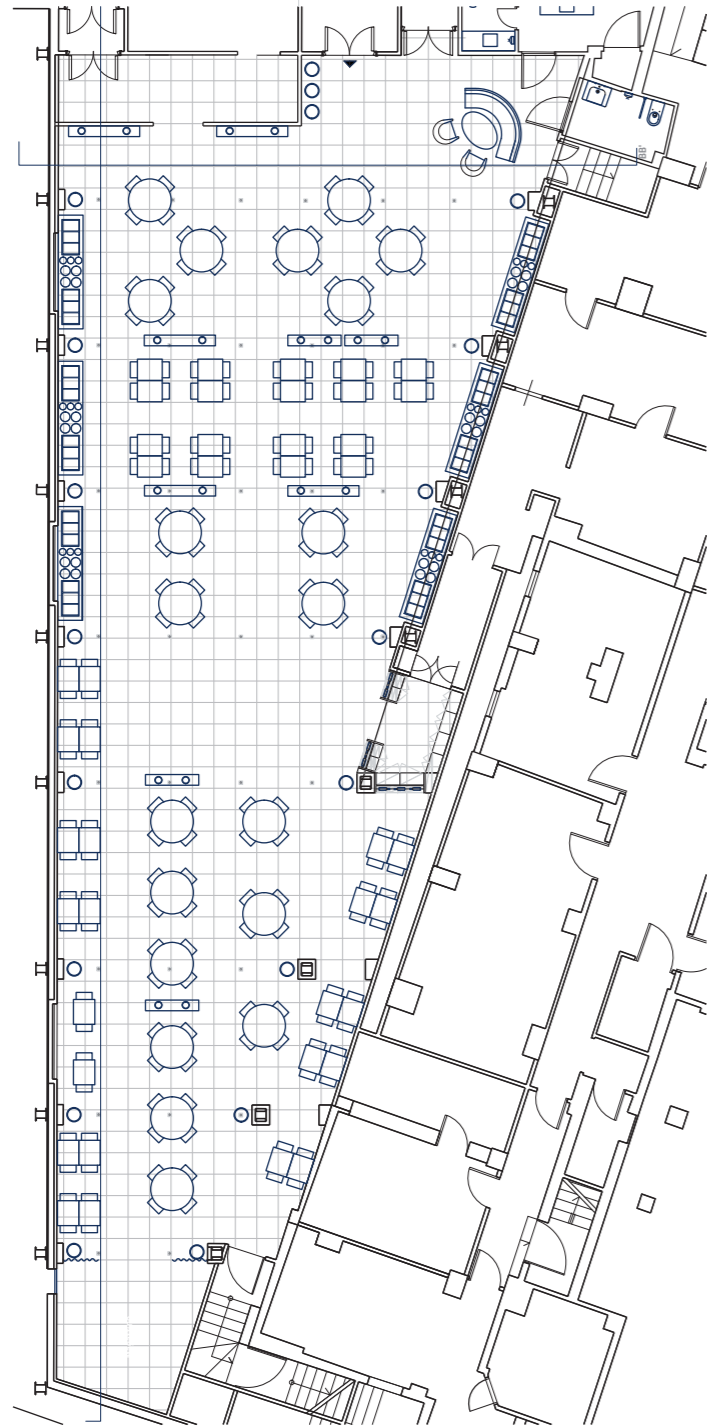


## 1 - REGENCY ROOM

75 m<sup>2</sup> / 807 sft  
up to 40

## 2 - EMPIRE ROOM

21 m<sup>2</sup> / 413 sft  
up to 80 p.



# HOLIDAY

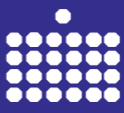


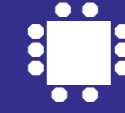


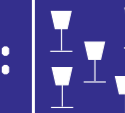
## 360° IMMERSIVE ROOM

### Banquet hall

374 mq / 4024 sft

#### TECHNICAL FEATURES

- n° 11 PROJECTORS:  
Optoma Full HD 1920x1080 pixel  
Laser technology DLP 4.500 Ansi lumen
- 2 X Server Video :  
Cpu Core i7 3,1 Ghz - 8 Gb Ram - SSD  
500Gb - S.O. Win 10 - Graphic card Nvidia  
6 output
- 2 x power supply
- Audio/Video 8x8 Hdmi to HD baseT  
Audio/Video 4x4 Hdmi to HD baseT
- Network Switch 16 ports
- Tablet – IPAD Wifi

		Luce	Piano	Larghezza (m)		Lunghezza (m)	Altezza (m)	Superficie (mq)	Theatre	Classroom	U - Shape	Boardroom	Cabaret	Banquet	Cocktail
		Light	Floor	Width (ft)		Lenght (ft)	Height (ft)	Area (sft)							
Sale Meeting Meeting Room	PLANA	-	I	m	3,7	5,7	3,5	21,1	20	12	12	16	8	14	30
				ft	12,1	18,7	11,5	226,9							
	EUCLIDE	-	I	m	4,8	8	3,5	38,4	25	20	16	20	10	22	30
				ft	15,7	26,2	11,5	413,2							
	REGENCY	-	ground	m	5	15	3,5	75,0	40	30	25	30	20	40	80
				ft	16,4	49,2	11,5	807,0							
	CIVININI	naturale sunlight	I	m	6,4	26	3,5	166,4	200	100	80	90	80	160	230
				ft	21,0	85,3	11,5	1790,5							
EMPIRE	-	ground	m	11	11	8	95	80	50	35	40	45	60	80	
			ft	36,8	36,8	26,2	1022,2								
Ristoranti Restaurants	CAVALIERI	-	ground	forma irregolare irregular form			-	45,0	-	-	-	-	-	60	70
								484,2							
HOLIDAY	-	-I	m	11	34	3	374,0	350	-	-	-	-	280	500	
			ft	36,08	111,52	9,84	4024,2								

# Capacity chart