

Radisson **BLU**
LONDON
BLOOMSBURY



MEETINGS AND EVENTS



MEET IN STYLE

Discover meeting and event spaces that inspire. Refurbished to a premium standard and designed in the style of a modern London townhouse, Radisson Blu Hotel, London Bloomsbury is an excellent choice for the discerning planner.

FROM 20 TO 230

Bloomsbury’s versatile spaces can host meetings and events of all kinds.

Business functions, weddings, private dinners, hen parties and book launches - regardless of your plans, our experienced planners are on hand to help.

The hotel’s largest and most impressive room is The Folio Suite, featuring stunning bay windows, a private bar and optional partitions.



TAKE A BREAK

Adjacent to The Folio Suite is The Drawing Room, a residential and intimate space to relax.

Whether you need a pre-function room, a breakout space or somewhere for guests to enjoy some quiet time, The Drawing Room exudes the calm and charm of a modern townhouse.



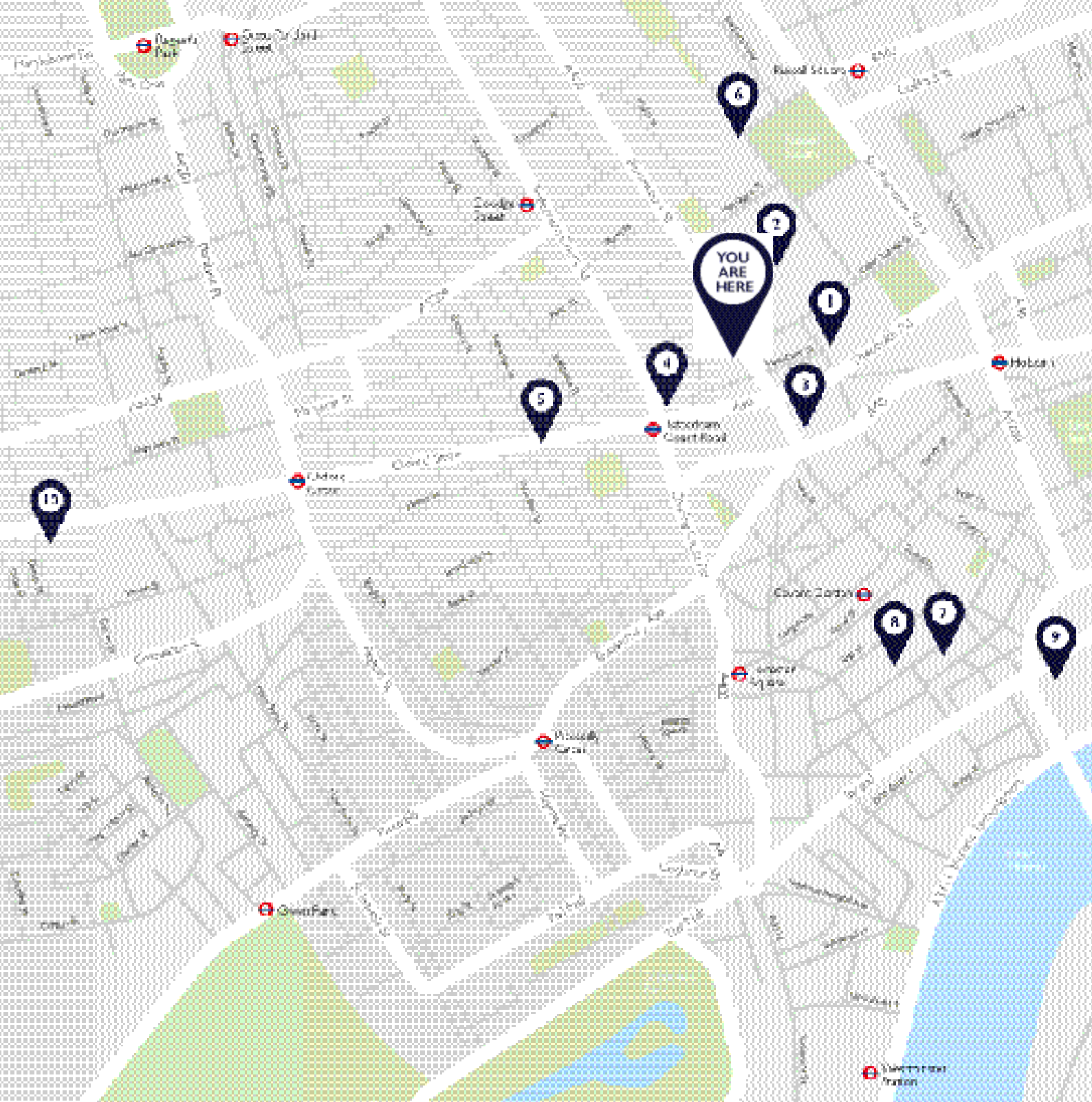


BE OUR GUEST

Set in the heart of Bloomsbury, Bloomsbury Street Kitchen is the perfect place to host an intimate private dinner with Mediterranean and Japanese cuisine...

YOU ARE HERE

Set in a prime location 50 metres from the British Museum, this hotel sits in the heart of the West End with Oxford Street, Covent Garden and Soho all on the doorstep. Close by, Tottenham Court Road and Holborn tube stations provide direct access to the City.



RADISSON BLU HOTEL, LONDON
BLOOMSBURY ★★★★★ (deluxe)
9-13 Bloomsbury Street
London, WC1B 3QD
T +44 (0)20 7666 2322
E events.bloomsbury@radissonblu.com

TRAVEL

Car Park
Bloomsbury Square

Airport
City Airport (9 miles)
Heathrow (18 miles)
Gatwick (28 miles)
Luton (35 miles)
Stansted (37 miles)

Trains
Euston (1 mile)
King's Cross St. Pancras
Eurostar (1.7 miles)

Underground
Tottenham Court Road
(Elizabeth, Central and Northern Lines)

POINTS OF INTEREST

- | | |
|---|---------------------------------|
| 1 The Cartoon Museum (1 min walk) | 8 Covent Garden (12 mins walk) |
| 2 British Museum (1 min walk) | 9 Somerset House (15 mins walk) |
| 3 The Shaftesbury Theatre (1 min walk) | 10 Bond Street (20 mins walk) |
| 4 Dominion Theatre (4 mins walk) | |
| 5 Oxford Street (5 mins walk) | |
| 6 Literary Tour of Bloomsbury (8 mins walk) | |
| 7 London Transport Museum (10 mins walk) | |

GROUND FLOOR

CAPACITY

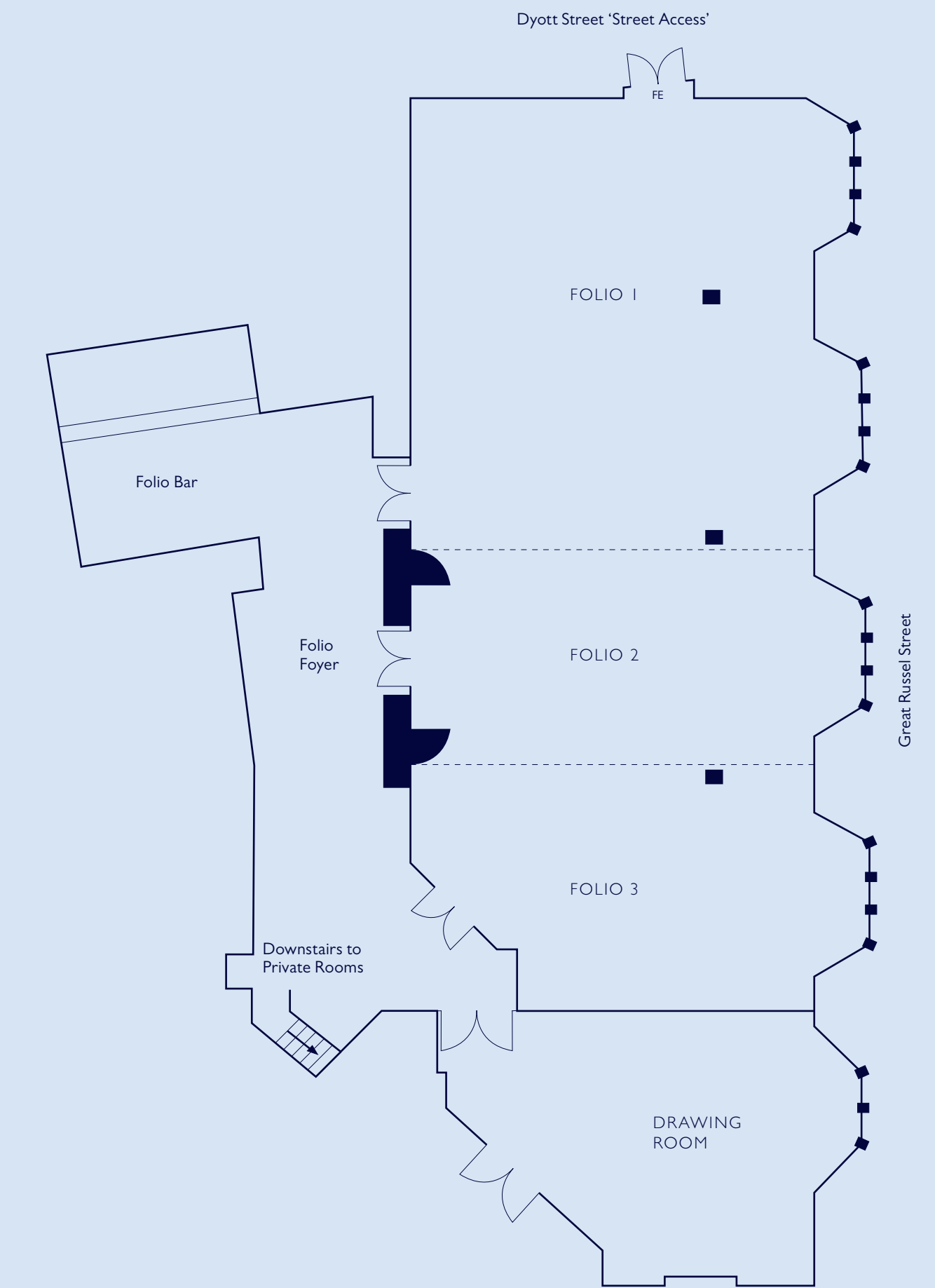
| | Theatre | Classroom | Boardroom | U-shape | Cabaret | Reception | Lunch/Dinner | Dinner Dance |
|---------------|---------|-----------|-----------|---------|---------|-----------|--------------|--------------|
| Folio Room | 230 | 120 | 50 | 60 | 120 | 350 | 220 | 200 |
| Folio 1 and 2 | 150 | 90 | 50 | 40 | 75 | 240 | 150 | 140 |
| Folio 2 and 3 | 140 | 60 | 36 | 35 | 60 | 150 | 100 | 120 |
| Folio 1 | 120 | 52 | 28 | 30 | 42 | 150 | 100 | 80 |
| Folio 2 | 60 | 32 | 24 | 24 | 24 | 75 | 50 | – |
| Folio 3 | 50 | 24 | 22 | 18 | 24 | 70 | 40 | – |

FLOOR DIMENSIONS

| | Area | Length (ft) | Width (ft) | Height (ft) |
|---------------|-------------------|---------------|-------------|-------------|
| Folio Room | 232 m² (2497 ft²) | 23.2 m (76.1) | 10 m (32.8) | 2.9 m (9.5) |
| Folio 1 and 2 | 170 m² (1830 ft²) | 17 m (55.8) | 10 m (32.8) | 2.9 m (9.5) |
| Folio 2 and 3 | 115 m² (1238 ft²) | 11.5 m (37.7) | 10 m (32.8) | 2.9 m (9.5) |
| Folio 1 | 117 m² (1259 ft²) | 11.7 m (38.4) | 10 m (32.8) | 2.9 m (9.5) |
| Folio 2 | 53 m² (570 ft²) | 5.3 m (17.4) | 10 m (32.8) | 2.9 m (9.5) |
| Folio 3 | 62 m² (667 ft²) | 6.2 m (20.3) | 10 m (32.8) | 2.9 m (9.5) |

All meeting rooms are fully air conditioned and benefit from:

- Complimentary Wi-Fi up to 150Mbps
 - Dedicated audio-visual support
 - LCD projection screens
- Business centre with printing facilities
 - Audio visual equipment, bespoke staging and additional lighting on request.



LOWER GROUND FLOOR

CAPACITY

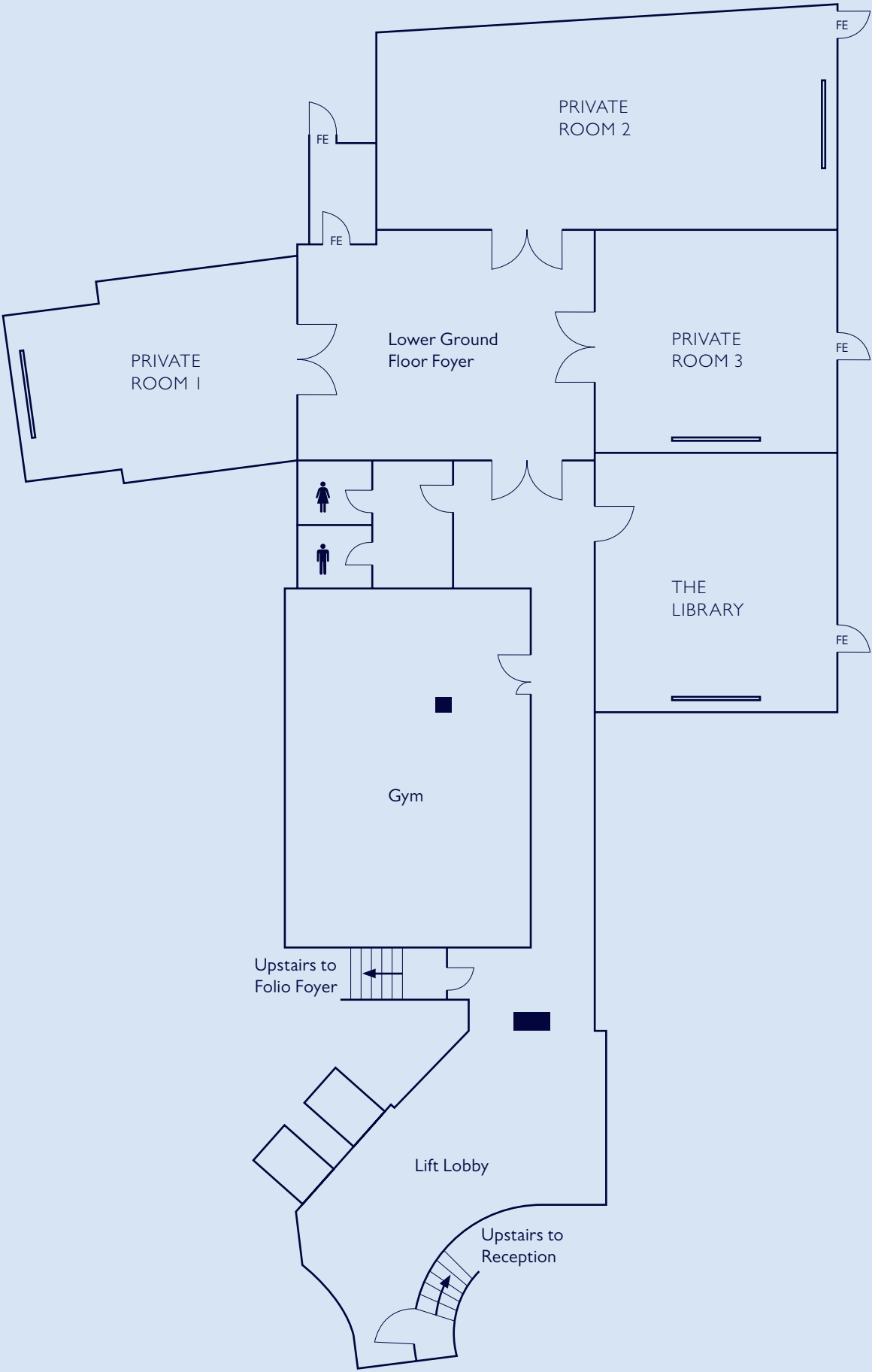
| | Theatre | Classroom | Boardroom | U-shape | Cabaret | Reception | Lunch/Dinner | Dinner Dance |
|----------------|---------|-----------|-----------|---------|---------|-----------|--------------|--------------|
| Private Room 1 | 34 | 16 | 15 | 16 | 16 | 35 | 20 | – |
| Private Room 2 | 60 | 28 | 30 | 32 | 48 | 60 | 50 | 40 |
| Private Room 3 | 28 | 16 | 15 | 16 | 16 | 30 | 20 | – |
| The Library | 30 | 12 | 12 | 16 | 16 | 30 | 20 | – |

FLOOR DIMENSIONS

| | Area | Length (ft) | Width (ft) | Height (ft) |
|----------------|--------------------|--------------|--------------|-------------|
| Private Room 1 | 40.5 m² (436 ft²) | 7.5 m (24.6) | 5.4 m (17.7) | 2.4 m (7.9) |
| Private Room 2 | 59.5 m² (640 ft²) | 11.9 m (39) | 5 m (16.4) | 2.4 m (7.9) |
| Private Room 3 | 31.92 m² (344 ft²) | 5.7 m (18.7) | 5.6 m (18.4) | 2.4 m (7.9) |
| The Library | 30.25 m² (326 ft²) | 5.5 m (18) | 5.5 m (18) | 2.4 m (7.9) |

All meeting rooms are fully air conditioned and benefit from:

- Complimentary Wi-Fi up to 150Mbps
 - Dedicated audio-visual support
 - LCD projection screens
- Business centre with printing facilities
 - Audio visual equipment, bespoke staging and additional lighting on request.





RADISSON BLU HOTEL, LONDON
BLOOMSBURY ★★★★★ (deluxe)

9-13 Bloomsbury Street
London, WC1B 3QD

T +44 (0)20 7666 2322

E events.bloomsbury@radissonblu.com

W [radissonhotels.com/en-us/hotels/radisson-blu-london-bloomsbury-street](https://www.radissonhotels.com/en-us/hotels/radisson-blu-london-bloomsbury-street)