





## A BOUTIQUE RETREAT

Discover London's picturesque Seven Dials village at Radisson Blu Edwardian Mercer Street, a boutique hotel set minutes from the historic Covent Garden piazza, famous theatres, museums and shopping.

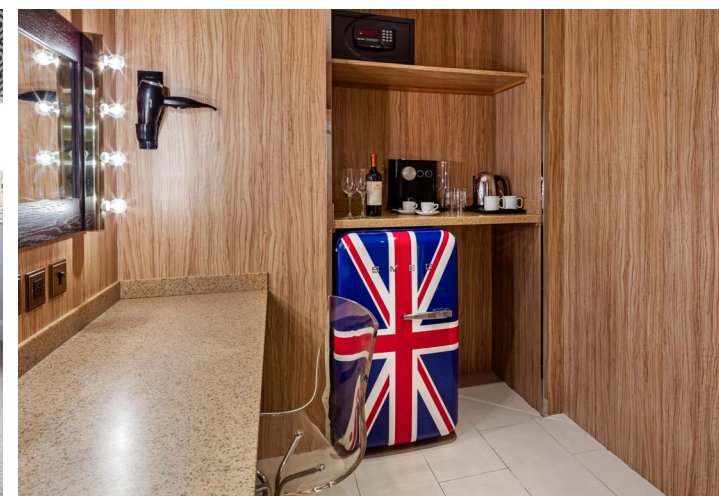


## BEDROOMS

A natural, elegant palette offsets a carefully handpicked selection of furnishings in Mercer Street's bedrooms, featuring comfortable handcrafted Vispring mattresses, goose down pillows and 350 thread count Egyptian cotton bedding.

### 137 air-conditioned bedrooms

- 28 Standard
- 47 Superior
- 54 Premium
- 8 Suites



## MEETING ROOMS

Located in between Covent Garden and Leicester Square Underground stations and easily accessible by taxi or car, the Mercer Street hotel is ideal for any event. Designed for creative thinking and efficiency, the hotel offers four diverse meeting rooms with a capacity of up to 60 people. Take advantage of a range of layouts and features, including Squiggle Glass, Interactive White Boards and fabric walls.

5 meeting rooms.

Capacity of up to 60.

Private dining available.

Hotel lounge available for private events.

[M&E Brochure](#)

[Virtual Tour](#)





# RESTAURANT

## Monmouth Kitchen

Monmouth Kitchen recreates the culinary delights of the Mediterranean and South America, showcasing a contemporary selection of Italian and Peruvian small plates complemented by fine wines and signature cocktails.

Natural materials create a relaxed space featuring exposed concrete columns, polished copper and marble tables as well as small-scale crafted vintage furniture.

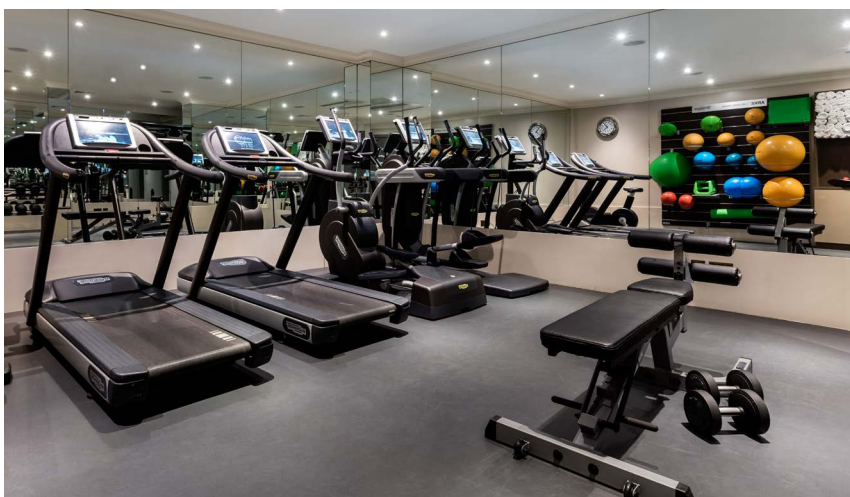
[Discover more](#)





## FACILITIES & SERVICES

- Complimentary Wi-Fi up to 150Mbps on unlimited devices 
- Edward virtual host 
- Samsung Smart TVs
- Streaming services via Apple TV 4.0 available on request
- In-room safe and mini fridge (stocked on request)
- In-room spa services
- 24-hour business centre
- 24-hour room service
- 24-hour fully-equipped gym
- Nespresso coffee machines available in all room types
- Complimentary bottled water and turndown service
- Complimentary digital newspaper and magazines





# TRAVEL

## Car Park

Parker Street

## Underground

Covent Garden (Piccadilly Line)

Leicester Square  
(Piccadilly and Northern Lines)

Tottenham Court Road  
(Central, Elizabeth and Northern Lines)

## Trains

Charing Cross (0.8 mile)

Waterloo (1 mile)

King's Cross St. Pancras

Eurostar (2 miles)

## Airport

City Airport (10 miles)

Heathrow (18 miles)

Gatwick (28 miles)

Luton (35 miles)

Stansted (37 miles)



## POINTS OF INTEREST

- 1 Seven Dials Monument (1 min walk)
- 2 Neal's Yard (2 mins walk)
- 3 Leicester Square (5 mins walk)
- 4 Covent Garden Piazza (5 mins walk)
- 5 Soho (5 mins walk)
- 6 Royal Opera House (6 mins walk)
- 7 Piccadilly Circus (9 mins walk)
- 8 Trafalgar Square (9 mins walk)
- 9 Oxford Street (10 mins walk)

### RADISSON BLU EDWARDIAN, MERCER ST ★★★★★ (DELUXE)

20 Mercer Street, Covent Garden,  
London, WC2H 9HD

T +44 (0)20 7836 4300

E [resmerc@radisson.com](mailto:resmerc@radisson.com)

W [radissonblu-edwardian.com/mercerstreet](http://radissonblu-edwardian.com/mercerstreet)

Owned and managed by Edwardian Hotels London

