

The Lounge

Radisson BLU
LONDON
MERCER STREET

MEETINGS AND EVENTS





MEETINGS & EVENTS SHOULD ALWAYS BE THIS EASY

Designed for creative thinking and efficiency, take advantage of a range of layouts and features in our Full HD-ready, air-conditioned meeting rooms, with all the latest technology and complimentary high speed Wi-Fi internet access. Our operations team will always be on hand to help set up, connect everything and answer any queries you may have.




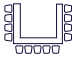

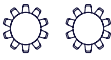

If you're looking for something less formal, our beautifully refurbished ground floor lounge area can be partitioned and used as a private meeting area. With floor-to-ceiling windows, comfy chairs and original artworks, it's the new way to meet in the heart of Covent Garden.

ALL MEETING ROOMS ARE FULLY AIR CONDITIONED AND BENEFIT FROM:

- Squiggle Glass
 - MagicIWB (Board-i)
 - Fabric walls
 - Sony Projector with LCD BrightEra Panel Technology
 - Complimentary Wi-Fi
 - Dedicated broadband connectivity available
 - Dedicated Wi-Fi network upon request
 - Digital event signage, incorporating client branding
- Full HD technology
 - Dedicated audio-visual support
 - Integrated AV control panel
 - CD, DVD, VHS, Blu-ray
 - LCD projector* and screen
 - MP3 and PC connectivity

*All LCD projectors are built into the ceiling.

CAPACITIES

	 Theatre	 Classroom	 Boardroom	 U-shape	 Cabaret	 Lunch/Dinner	 Reception
Private Room 3	—	—	6	—	—	—	—
Private Room 4	30	12	16	14	12	16	30
Private Room 5	15	—	8	—	—	—	—
Private Room 6	42	24	10	22	24	40	60
The Lounge	30	—	10	18	—	12	60

	Area	Length m (ft)	Width m (ft)	Height m (ft)
Private Room 3	15m (161 ft²)	4.1m (13'4")	3.3m (10'8")	2.7m (8'8")
Private Room 4	38m (409 ft²)	7m (22'9")	5.5m (18')	2.9m (9'5")
Private Room 5	20m (215 ft²)	4.9m (16')	4m (13'1")	2.8m (9'1")
Private Room 6	63m (678 ft²)	8.2m (26'9")	7.7m (25'2")	2.6m (8'5")
Lounge	60m (645 ft²)	8.4m (27'5")	7m (22'9")	2.4m (7'8")



SPACES

OUR TECHNOLOGY INCLUDES:

- Squiggle Glass

Perfect for brainstorm sessions, these magnetic panels can be written on and wiped clean, eliminating the need for flipcharts.

- MagicIWB (Board-i)

MagicIWB transforms a display with touchscreen capabilities into an interactive HD tablet device equipped with an assortment of pen styles for maximum flexibility and convenience. It also supports a variety of media types, including PowerPoint presentations, images, video and Flash animation to create an information-rich learning environment.

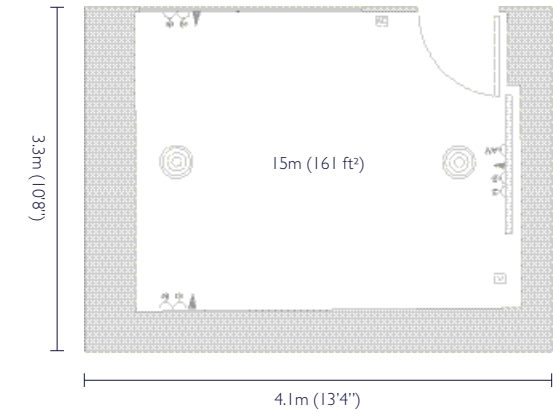
- Fabric walls

If you prefer to use paper, our specially designed, fabricated walls give you the option to pin up presentations and printouts around the room.

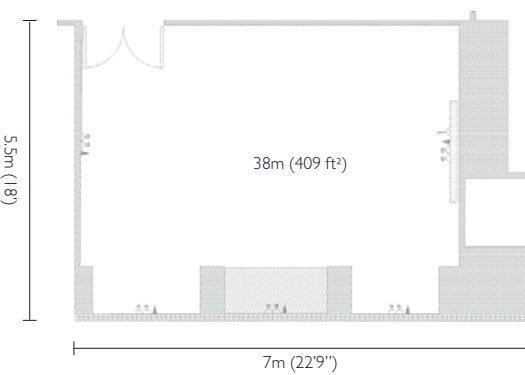
- Sony Projector with LCD BrightEra Panel Technology

The world's first LCD laser projector; experience game-changing visuals and superb performance in a classroom or meeting situation.

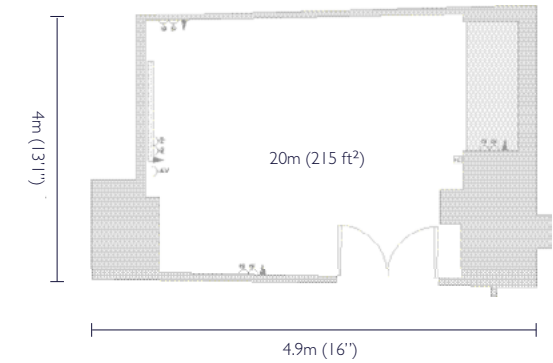
PRIVATE ROOM 3



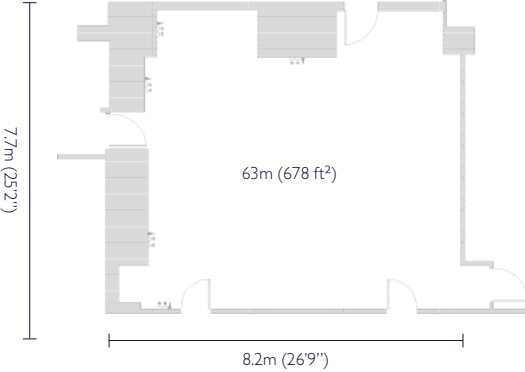
PRIVATE ROOM 4



PRIVATE ROOM 5



PRIVATE ROOM 6





PRIVATE DINING

WE OFFER A RANGE OF PRIVATE DINING OPTIONS, WITH 4 PRIVATE MEETING ROOMS, A STUNNING RESTAURANT AND LOUNGE AREA. OUR DEDICATED TEAM WILL BE ON HAND TO ENSURE YOUR EVENT RUNS EXACTLY AS YOU INTENDED.

With 4 private meeting rooms, fully air-conditioned and stunningly designed, we can seat small parties of 6 to larger functions of 40 guests. Prior to your event, we will arrange to meet with you to discuss all the details, from lighting and music to soft furnishings and timings.

For a more informal meeting or an intimate dinner, our stunning lounge area can be reserved for special events. With a long table and stylish bookcase, the area lends itself well to more exclusive functions. Alternatively, if you're looking to soak up the atmosphere of Monmouth Kitchen, areas of the restaurant can be reserved.



RESTAURANT

EMBRACING THE ART OF SHARED DINING IN THE HEART OF SEVEN DIALS, MONMOUTH KITCHEN EVOKES AN AMBIENCE TO RECREATE THE CULINARY DELIGHTS OF THE MEDITERRANEAN AND SOUTH AMERICA.

Discover a contemporary selection of Italian and Peruvian small plates, complemented with the finest wines and our signature cocktails.

With a separate entrance to the hotel, Monmouth Kitchen has been thoughtfully refurbished and stands proud as a popular tapas kitchen in its own right. With a stylish bar area leading through to the main restaurant, the black and white furnishings add to the industrial feel.

Architectural brick partitions cleverly divide the dining areas, without compromising on light or space, and the different table levels create an uncluttered feel, with a view onto Covent Garden's cobbled streets.

Whether you're looking to host a small dinner, large delegate lunch or drinks reception, we can deliver exquisite food and drink menus to suit your individual requirements.

www.monmouthkitchen.co.uk





ROOMS

137 AIR-CONDITIONED BEDROOMS BRING COMFORT AND ELEGANCE TOGETHER BEAUTIFULLY AT RADISSON BLU HOTEL, LONDON MERCER STREET.

Calming, muted shades, tactile fabrics and original art works both soothe and stimulate.

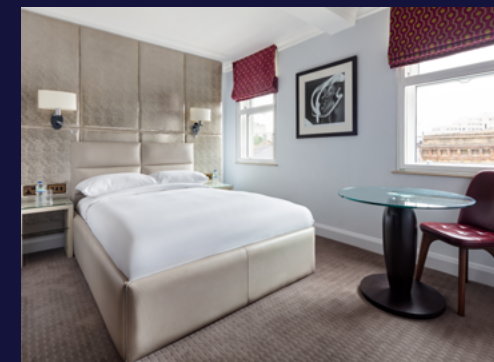
Larger deluxe rooms include extra work space, a spacious seating area and high speed Wi-Fi is complimentary throughout.

A turndown service and bathrobes are offered in all of our bedrooms, with tea and coffee making facilities, complimentary water, in-room safe and smart TVs.

For added peace of mind, access to bedroom floors is by room key only.

Capacity

- 8 Deluxe suites
- 41 King deluxe
- 56 Doubles
- 10 Business class
- 16 Twins
- 6 Studios



LOCATION

RADISSON BLU HOTEL,
LONDON MERCER
STREET

★★★★ (deluxe)

20 Mercer Street
Covent Garden
London
WC2H 9HD

T +44 (0)20 7845 8613

F +44 (0)20 7240 3540

E [events.mercerstreet@
radissonblu.com](mailto:events.mercerstreet@radissonblu.com)

TRAVEL

Car Park

Museum Street
Shelton Street

Underground

Covent Garden (Piccadilly line)
Leicester Square (Northern line)
Tottenham Court Road
(Central line)

Airport

London City Airport (9 miles)
Heathrow (18 miles)
Gatwick (28 miles)
Luton (35 miles)
Stansted (37 miles)

POINTS OF INTEREST

- 1** Neal Street (2 minutes' walk)
- 2** Covent Garden Piazza (5 minutes' walk)
- 3** Royal Opera House (6 minutes' walk)
- 4** Leicester Square (5 minutes' walk)
- 5** Piccadilly Circus (9 minutes' walk)
- 6** Trafalgar Square (9 minutes' walk)
- 7** Soho (5 minutes' walk)
- 8** Oxford Street (10 minutes' walk)