

MENU

THE VIEW

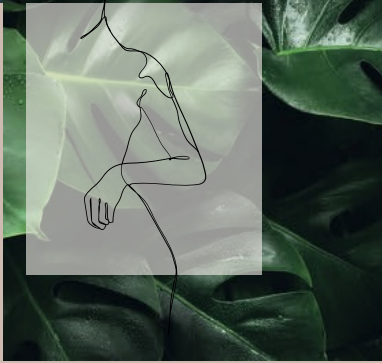
BY 27 pinkx

010 226 9120

10th Floor, Radisson Blu Hotel, Sandton | www.theviewspa.com



SPA & WELLNESS FACILITIES



Emerge renewed. Shift into a place of tranquil beauty with our Spa & Wellbeing Facilities. We invite you to step in and melt away tension as you are transitioned you into a relaxed and radiant state.

ROMAN BATH 30 mins | R440 per person

(Complimentary with every treatment above R500 booked at the spa)

Our heated Roman Bath surrounded by the spectacular views of the Sandton skyline. This group orientated facility allows for both socialising and relaxation.

SAUNA ROOM 30 mins | R440 per person

(Complimentary with every treatment above R500 booked at the spa)

A Sauna room is a great way to improve circulation and relax your body. The heat helps to loosen stiff muscles and joints and improve blood circulation

HALOTHERAPY 30 mins | R440 per person

Halotherapy is enjoyed in a salt room; a relaxing space in which you can inhale microscopic particles of pharmaceutical-grade salt in a controlled environment. Breathing in controlled amounts of salt has a long list of skin, respiratory and lifestyle benefits for people of all ages.

VICHY SHOWER 30 mins | R440 per person

To begin your treatment, our therapists will perform a full body exfoliation to help buff away dead skin cells and give smoother and brighter skin. You'll really unfold into deep relaxation when our therapists turn on the 6 shower jets that are horizontally situated above you on your Vichy Bed. The shower jets will not only help to ease muscle tension but also aids lymphatic drainage as the massage jets stimulate circulation and detoxification in the body.

RASUL RITUAL 30 mins | R520 per person

Indulge in a traditional Middle Eastern cleansing ritual with a session in our custom-built Rasul Chamber. Ideal for couples, the Rasul Chamber treatment uses steam and a self application of mineral-rich mud for an experience that will both de-stress and detoxify the body.

KNEIPP THERAPY 30 mins | R199 per person

A revitalizing treatment combining hot & cold water applications to stimulate circulation, boost immunity & promote deep relaxation. Inspired by nature & holistic wellness



CLASSIC MASSAGE THERAPIES

BACK, NECK & SHOULDER 30 mins | R520 45 mins | R620

Rejuvenate with this hydrating massage that specifically targets the back and shoulder areas.

SCALP, NECK AND SHOULDER 30 mins | R510

Deeply relax as a gentle wave of warm oil descends across your scalp and is slowly massaged into the scalp, neck and shoulders to ease aches tension.

SERENITY FOOT MASSAGE 30 mins | R475

Restore vitality with our massage technique designed to specifically revive tired and achy feet

REFLEXOLOGY 45 mins | R630

A relaxing pressure point foot massage that focuses on balancing the body to re-establish energy flows, relieve stress and restore harmony.

SWEDISH MASSAGE 60 mins | R820 90 mins | R1135

Melt away tension with a light to medium pressure massage. Using rich oils that lull the body into a deep state of relaxation

EXPECTANT MOTHER TO BE 60 mins | R860

Treat the mother-to-be with our gentle, soothing massage lovingly composed for those who are expecting.

SPECIALITY MASSAGE THERAPIES

AROMATHERAPY 60 mins | R860 90 mins | R1210

Personalize your own sensory experience by selecting one of our highly therapeutic oil blends to be expertly massaged into the body. A profoundly relaxing journey

HOT STONE MASSAGE 60 mins | R880 90 mins | R1260

Melt away tension and stress as slow, carefully orchestrated massage techniques allow a continuous flow of heat to infuse the body and impart a deep sense of relaxation.

DEEP TISSUE MASSAGE 60 mins | R925 90 mins | R1260

Sink into complete relaxation during a full body, deep tissue massage using techniques that address chronic aches and pains.

CBD MASSAGE 60 mins | R935 90 mins | R1365

Traditional Swedish techniques with the added therapeutic benefits of CBD. This holistic approach relieves stress, calms the nervous system, alleviates pain, and is personally tailored to suit your individual needs.

CUPPING MASSAGE 60 mins | R935

Cupping Massage Therapy is a natural body massage therapy that enhances circulation and expels toxins and waste in the body.



COUPLES MASSAGE THERAPIES

SWEDISH MASSAGE 60 mins | R1599 90 mins | R2199

Melt away tension with a light to medium pressure massage. Using rich oils that lull the body into a deep state of relaxation

MASSAGE ADD ON

HOT STONE R150

CBD R250

CUPPING R250

AROMATHERAPY R180

Side-by-Side Bliss



BODY RESTORE TREATMENTS

COCO BODY POLISH

30 mins | R580

Lift the veil of dullness, revealing renewed, supple, and vibrant skin with this exquisite body ritual. A delicate coconut and African coffee are carefully balanced to both deeply exfoliate and replenish the skin while leaving you with an iridescent glow.

BACK FACIAL

60 mins | R685

Our back facial addresses specific concerns such as congestion, back acne, and dehydrated skin in an often difficult to reach area. Your service begins with a deep pore cleanse followed by a relaxing steam to open the pores, an exfoliation and extractions .

DERMAMELAN INTIMATE 30 mins | R13980

Dermamelan Intimate is a professional depigmentation method for the intimate area, specifically developed to treat the genital-perineal, peri-anal area, and inner thighs. Dermamelan Intimate's depigmentation action is complemented with an anti-aging action, therefore making it a unique, all-in-one solution with visible results after a single clinical session.

SLIMMING WITH G5

The G5 massage device treats cellulite and stubborn fat. Problem areas are treated with rhythmic vibrational movements with the G5 device. It is among the most effective treatment methods for both tightening the body and the rapid elimination of cellulite. The treatment opens local connective tissues and accelerates fat burning at the same rate.

FULL BODY Exfoliation + G5 90 mins | R1 260

HALF BODY Exfoliation + G5 60 mins | R840

G5 FULL BODY MASSAGE 60 mins | R820

G5 HALF BODY MASSAGE 30 mins | R525

BUM BUM FACIAL 60 mins | R760

This luxury treatment targets a variety of buttock skin issues. Like the skin on your face, the skin on your buttocks are prone to dryness, acne and pigmentation. This treatment includes a deep cleanse, steam, exfoliation, blackhead and whitehead extraction, soothing mask, and targeted serums.



MATIS FACIALS

VITAMIN C ECLAT FACIAL 30 mins | R490

A skin brightening treatment specially formulated to reduce the appearance of a lackluster complexion. Steam and extractions are not included .

HYDRATION SOURCE FACIAL 60 mins | R899

The ultimate hydrating facial, this facial uses the latest biotechnology and treats all of the skin's basic functions, restoring and regenerating moisture, balance and firmness. This replenishing treatment brings instant comfort and a glowing complexion for dry, dehydrated or mature skin.

PURITY DEEP CLEANSE FACIAL 60 mins | R1190

An advanced treatment which uses balanced natural acids and oil-regulators to tackle blackheads, white heads and superficial shine. Recommended for those with congested skin, this facial cleanses, purifies, detoxifies and refines.

CORRECTIVE PEEL 60 mins | R1 200

Repair your skin with this luxurious peel. This facial uses the power of active ingredients to reduce wrinkles and the first signs of ageing.

MESOESTETIC PEELS

GLOBAL EYECON 20 mins | R650

A professional treatment with global action for the eye area: it corrects wrinkles, under-eye bags and circles, sagging and pigmentation in the periorcular area.

MELANOSTOP TRAN3X 20 mins | R980

Melanostop is a gentle peel that treats pigmentation, with little to no downtime. It renews the upper layers of the skin, while increasing its thickness and brightens the skin.

MESOPEEL JESSNER 20 mins | R980

This peel is indicated to treat signs of aging: expression lines and superficial wrinkles, loss of firmness, dilated pores, dull skin, irregular tone and texture , with little to no downtime. It renews the upper layers of the skin, while increasing its thickness and brightens the skin.

BLEMISKIN 20 mins | R980

This peel is indicated to treat acne with a keratolytic, comedolytic, anti-inflammatory and antibacterial effect. Evens skin texture and tone, favours control of sebaceous secretion and reduces pore size.

RETIFLASH PEEL 60 mins | R1375

A professional-grade chemical peel designed to rejuvenate the skin by promoting cell renewal & improving texture. It combines retinol & other active ingredients to target signs of aging, uneven skin tone & fine lines, leaving the skin smoother, brighter & more radiant

ISCLINICAL FACIALS



DERMAPLANING 30 mins | R620

DERMAPLANING & MASK 45 mins | R790

Dermaplaning is a super effective exfoliating treatment in which a trained aesthetician uses a surgical scalpel to gently scrape off any dead skin cells on the surface of your skin and (along with the peach fuzz on your face).

FIRE AND ICE FACIAL 60 mins | R1 380

The legendary FIRE & ICE FACIAL is designed to rapidly and safely resurface and rejuvenate the skin with no downtime. This professional treatment helps reduce the appearance of fine lines and wrinkles and improves the look of uneven skin tone and rough texture while addressing blemish-prone skin; resulting in a more hydrated, radiant complexion

EXPRESS FIRE AND ICE FACIAL 30 mins | R950

HONEY ENZYME FACIAL 60 mins | R1 380

The Honey Enzyme Facial is a luxurious, exfoliating, hydrating facial that enhances skin with gentle massage and soothing hydration. Effective for all skin types, each use leaves skin as soft as it's ever been. The result is a dramatically smoother, brighter and revitalized complexion with a noticeable glow.

FOAMING ENZYME FACIAL 60 mins | R1 440

This vibrant treatment leaves the skin clear and glowing for days. The Foaming Enzyme Masque System combines potent papaya and pineapple enzymes with pharmaceutical grade glycol acid to produce a luxurious foaming treatment. This professional treatment produces a luxurious foaming activity while bioactive ingredients exfoliate and deep cleanse the pores; revealing a polished, healthy and radiant complexion.



DELUXE FACIAL

THE LA FACIAL

90 mins | R2200

If you have exhausted the beauty aisles and still aren't rocking the ever elusive glow, you have come to the right place. 27Pinkx traveled to Los Angeles to learn from the highest ranking skincare experts of the world.

The LA facial is the ultimate skin refining treatment that includes a signature cleanse, facial lymphatic drainage and macro muscle stimulation to promote glowing skin and contoured features.

Prepare for 90 minutes of clinical skincare and pure bliss. Your skin will be enriched with antioxidants and serums for incomparable hydration and show stopping skin.

Intraceuticals Oxygen Facial

This luxuriously hydrating treatment is beloved by stars and skincare experts alike for its ability to plump and hydrate the skin, while softening the appearance of fine lines & wrinkles

Rejuvenate 60 mins | R2250

Opulence 60 mins | R2500

Bakuchiol 60 mins | R2300



FACIAL ENHANCEMENTS

OXYGEN ADD ON

20 mins | R600

What will Hyperbaric Oxygenation do for my skin?

Hyperbaric oxygen triggers the bodies' own natural healing functions and the skin will rapidly respond and heal itself in such a favourable environment. Fine lines and wrinkles will "plump up" when the skin is given the oxygen and nutrients it needs. Elasticity, suppleness and a healthy glow are just some of the benefits of oxygenation and aid in anti-aging and rejuvenation of the skin.

Skin that is treated with pure oxygen more effectively fights bacteria that is associated with acne and other skin conditions because in an oxygen rich environment, bacteria, viruses, and fungal infections do not survive.

LED THERAPY

30 mins | R400

LED (Light Emitting Diode) Phototherapy utilises clinically proven wave lengths to accelerate the rejuvenation of the skin by boosting collagen and elastin production.

Hailed as the perfect complexion boost, LED phototherapy stimulates the skin's natural repair processes to promote healthy looking skin by accelerating cell renewal as well as resolve a range of skin concerns. It also improves circulation, reduces pigmentation and redness as well as stimulates healing of blemishes /acne. LED phototherapy can be added to any Deluxe treatment.

HIGH FREQUENCY

15 mins | R180

High frequency increases oxygen to the skin, improving the overall texture, tone, and glow and helps to treat acne problems. All of this promotes collagen stimulation and elastin production, providing a firmer and more youthful appearance. The oscillation produced by high frequency aids in lymphatic drainage and helps to evenly disperse excess fluid.



DERMAPEN

Skin tightening, lifting and rejuvenation, Improving acne scars and wound healing, Improving wrinkles and fine lines, Minimising pore size and uneven skin surface, Improving stretch marks, Lightening hyperpigmentation with active serums

FULL FACE & NECK 60 mins | R1 600

STOMACH 60 mins | R1 738

BACK 60 mins | R2 090

HALF BACK 60 mins | R1 232

BUTTOCKS 60 mins | R1 342

ADD ON SOLUTIONS

DIPIGMENTING R400
(Smooths out skin tone)

CENTELLA R350
(Softens & smooths out skin texture)

VITAMIN C R400
(Stimulates skin regeneration)

AQ SKIN SOLUTIONS

GFIT is used to supplement the skin with selected biotechnologically derived Growth Factors to reverse the signs of ageing and aid in skin cell turnover. During each GFIT treatment, an AQ Prescription Serum is infused into the skin to enhance the skin's natural restorative process, promote collagen production, healthy circulation and cellular renewal.

AQ Dermastamp is also used to introduce channels into the skin and aid the delivery of these important growth factors directly into the dermis and provide faster, more dramatic results when compared to using the serum or microneedling as standalone treatments.

FIRST TREATMENT **R2600**

SECOND TREATMENT ONWARDS **R2000**

AQ SKIN SOLUTIONS HAIR LOSS

AQ Skin Solution's Advanced Hair Complex + system was created to address aging hair follicles and hair loss by employing patented growth factor technology to promote healthy hair. Stem cells lining the hair follicles are crucial for the production and maintenance of hair. Supplementing this with growth factors and active ingredients provides support to these stem cells so that hair can thrive. AQ's advanced formulation works by nourishing hair follicles to a more functional and healthy state with growth factors, active ingredients, and fruit oils.

FIRST SESSION **R2 750**

2ND SESSION ONWARDS **R2 200**

5 SESSIONS **R9817**



COSMELAN

The Cosmelan Depigmentation treatment is a professional depigmenting method that assists in reducing and removing the most severe and resistant pigmentation spots with maximum efficacy and safety.

30 mins | R18 500

We do the Cosmelan Peel in 2 Steps:

Step 1: Cosmelan Peel Application

- The Cosmelan Peel application will be done by your Skin Specialist on the premises. Preferably during the morning. You will then go home with proper instructions on how and when to remove the Cosmelan Peel.
- The instructions also include all the detail of the Cosmelan Peel itself and further information.

Step 2: Homecare

- The Cosmelan Peel is a 3-6 month process where pigmentation, melasma, sun spots, uneven skin tone, dark marks, will still improve. The 3 months includes specific homecare and regular Follow Ups with your Skin Specialist.

MELINE PEEL

The MeLine treatment process is described as 'controlled chemical dermabrasion' and is a customised process that uses the application of MeLine's specially formulated peel mask to lift away the top layer of dead skin cells.

A MELINE peel targets hyper-pigmentation, fine lines and wrinkles, as well as acne and acne scarring. The MELINE process includes preparation and peel, followed by specific aftercare products to use at home designed to control pigmentation, decrease melanin production, promote skin cell renewal, improve sun damage, and promote an even skin tone.

A course of 2-3 sessions are required and recommended

30 mins | R2860



MANICURES

EXPRESS MANICURE

30 mins | R295

Nail Buffing, filing, shaping and paint or shine.

EXPRESS FRENCH MANICURE 45 mins | R320

Nail Buffing, filing, shaping and french polish paint

SCRUB & RUB

30 mins | R320

Ideal for the "always working hands". Experience the healing touch as your hands and forearms are gently exfoliated with re-mineralising granules, followed by an ultra-relaxing massage that addresses every exhausted muscle in your hands and arms with its soothing qualities.

THE VIEW SIGNATURE MANICURE 60 mins | R440

Indulge in an African inspired spa manicure, treating your hands and forearms to a gentle exfoliation followed by an African Earth fusion hand massage, whilst including nail and cuticle attention, followed by a nail colour of your choice for your rejuvenated hands.

THE VIEW DELUXE MANICURE 75 mins | R545

This beautiful therapeutic treatment begins with a hand exfoliation to unveil fresher, softer skin. Feel all fatigue drift away while your hands are soaked in a fresh lemon bath and softening fizz ball. Enjoy a warm paraffin infusion to hydrate and repair your hands. This treatment finishes off with a decadent massage. Treatment includes cuticle work and finishes with your choice of a professional quality polish or shine.

GEL POLISH MANICURE 90 mins | R525

Indulge in our signature manicure with a gel paint

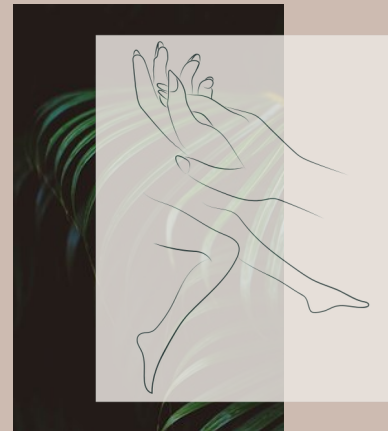
GEL APPLICATION 45 mins | R340

GEL PAINT SOAK-OFF 15 mins | R150

ACRYLIC SOAK OFF 30 mins | R180

PARAFFIN MASK 20 mins | R200

SOFT GEL TIPS R650



PEDICURES

EXPRESS PEDICURE

Nail Buffing, filing, shaping and paint or shine.

30 mins | R320

EXPRESS French pedicure

Nail Buffing, filing, shaping and french polish paint

45 mins | R350

SCRUB AND RUB FOOT RITUAL

This "soulful" journey will take your feet through a sugar exfoliation whilst soaking in a herbal foot bath. Allowing your feet and legs to relax completely. This treatment finishes off with a muscle soothing foot and leg massage

45 mins | R370

THE VIEW SIGNATURE PEDICURE

60 mins | R505

Pamper tired feet and legs during a soothing spa pedicure, focusing on exfoliation of rough skin, a customized nourishing African butter massage, including nail and cuticle attention. Choose a dazzling nail colour for your gorgeous new feet

THE VIEW DELUXE PEDICURE

90 mins | R715

This beautiful therapeutic treatment begins with a foot exfoliation and callus file to unveil fresher, softer skin. Feel all fatigue drift away while your feet are soaked in a fresh lemon bath and softening fizz ball. Enjoy a warm paraffin infusion to hydrate and repair your feet. This treatment finishes off with a decadent massage. Treatment includes cuticle work and finishes with your choice of a professional quality polish or shine.

MEDI HEEL PEDICURE

75 mins | R560

The ultimate foot treatment for dry feet. The Spa-Grade Medical Foot Peel and pedicure is a transformative experience designed to reveal softer, smoother, and revitalised feet.

MEDI HEEL PEEL

15 mins | R295

GEL POLISH PEDICURE

90 mins | R580

Indulge in our signature pedicure with a gel paint

GEL APPLICATION

45 mins | R340

GEL PAINT SOAK-OFF

15 mins | R150

PARAFFIN MASK

20 mins | R200

MANI & PEDI DUO

120 mins | R850

GEL HANDS AND FEET

90 mins | R610



ACRYLIC NAILS

SCULPT		TIPS	OVERLAY	
LONG	SHORT			
R650	R550	R475	R420	Natural
R680	R580	R495	R440	Colour
R705	R599	R525	R475	French
R705	R599	R580	R495	Ombre
R380	R380	R380	R380	Infills

WAXING & TINTING

LIP

R140

CHIN

R140

BROW WAX & SHAPING

R155

FULL FACE

R285

NECK

R160

FACIAL SIDES

R140

UNDERARMS

R160

HALF ARM

R210

FULL ARM

R255

BROW / LASH TINT

R120

BROW & LASH TINT COMBO

R230

BIKINI SIDES

R220

BRAZILIAN

R295

HOLLYWOOD

R360

FULL LEG

R410

3/4 LEG

R385

HALF LEG

R330

STOMACH

R320

BACK

R330

WAX COMBO

Wax any 4 areas &
receive the cheapest
area free



THREADING

Threading is an ancient method of hair removal that originated in Southeastern Asia and is still popular today. It's been around for centuries and is a way of shaping eyebrows using a cotton thread. How does threading work? Threading involves pulling a cotton thread along unwanted hair in a twisting motion, trapping hair in a mini lasso, and lifting it up and out of the follicle. It is an ideal hair removal technique because it is natural and precise.

LIP
R158

CHIN
R158

BROW
R158

LIP & CHIN
R285

LIP & BROW
R285

LIP , BROW & CHIN
R370

LASHES & LAMINATION

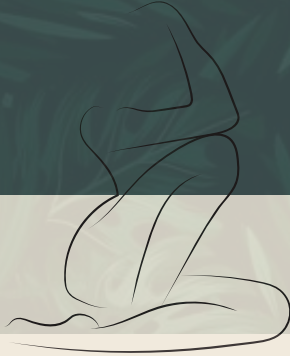
CLASSIC SET 2H	R990
HYBRID SET 2H	R1155
VOLUME SET 2H	R1420
2 WEEK FILL	R460
3 WEEK FILL	R550
LASH REMOVAL	R275
LASH LIFT	R650
BROW LAMINATION	R650



SPA PACKAGES

JET SETTER 90 mins | R945 per person

30 Mins Matis Eclat Glow Facial
30 Mins Express Manicure
30 Mins Express Pedicure



HEAD TO TOE RENEWAL 2,5 hrs | R1260 per person

60 Mins Swedish Full Body Massage
60 Mins The View Signature Pedicure
30 Mins Halo Therapy In Our Salt Room

PRESSURE POINT REVITALISER 2 hrs | R1 575 per person

30 Mins Back Neck & Shoulder Massage
30 Mins Pressure Point Foot Massage
30 Mins Halo Therapy In Our Salt Room
Light Lunch & Non-Alcoholic Bubbles

JOURNEY TO EUPHORIA 4 hrs | R2150 per person 4 hrs | R3875 per couple

45 Mins Full Body Exfoliation
60 Mins Hot Stone Or Aromatherapy Massage
60 Mins The View Signature Manicure
60 Mins The View Signature Pedicure

THE ULTIMATE DETOX 3 hrs | R2290 per person

30 Mins G5 Cellulite Massage
60 Mins Cupping Massage
60 Mins Matis Hydration Source Facial
30 Mins Halo Therapy In Our Salt Room

LUXURY ESCAPE 4 hrs | R2415 per person 4 hrs | R4350 per couple

60 Mins Swedish Full Body Massage
60 Mins Matis Hydration Source Facial
60 Mins The View Signature Manicure
60 Mins The View Signature Pedicure



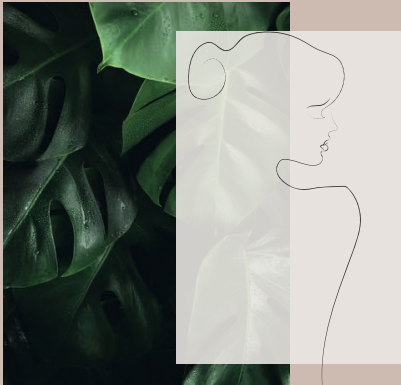
CELEBRATORY RETREATS

BREAKFAST & BUBBLES 3 hrs | R2400 per person

60 Mins The View Signature Pedicure
60 Mins Shea Butter Massage
30 Mins Halo Therapy In Our Salt Room
Non-Alcoholic Bubbles & Breakfast

MOTHER TO BE 3,5 hrs| R2625

60 Mins Pre-Natal Full Body Massage
60 Mins The View Signature Manicure
60 Mins The View Signature Pedicure
Light Lunch & Fresh Fruit Juice



ROMANTIC ESCAPE 3 hrs | R2785 per person 3 hrs | R5249 per couple

60 Mins Hot Stone Massage
30 Mins Matis Brightening Facial
30 Mins Hand & Foot Scrub
30 Mins Halo Therapy In Our Salt Room
Snack Platter & Non-Alcoholic Bubbles

MOM & ME 3,5 hrs | R1575 per person 3,5 hrs | R2835 per couple

60 Mins Swedish Full Body Massage
60 Mins Signature Manicure
30 Mins Signature Pedicure
30 Mins Halo Therapy In Our Salt Room
Snack Platter & Non-Alcoholic Bubbles

BIRTHDAY PACKAGE Half Day | R4499

60 Mins IsClinical Foaming Enzyme Facial
30 Mins Full Body Exfoliation
60 Mins Aromatherapy Massage
30 Mins The View Express Manicure
30 Mins The View Express Pedicure
Light Lunch & Non- Alcoholic Bubbles

**COMPLIMENTARY BIRTHDAY WAFFLE AND
FRUIT JUICE FOR THE BIRTHDAY PACKAGE**



CORPORATE & CONFERENCE PACKAGES

REVITALISE ME

1 hrs | R735 per person

30 Mins Swedish Back Neck & Shoulder Massage
Hand Ritual
Foot Ritual
Complimentary Use Of The Sauna & Salt Room

Discounts Apply To Groups Of 10 And More

PAMPER ME

3 hrs | R1680 per person

60 Mins Swedish Massage
60 Mins The View Signature Manicure
60 Mins The View Signature Pedicure
Complimentary Use Of The Sauna & Salt Room

Discounts Apply To Groups Of 10 And More



SPA MEMBERSHIPS

DESIGNED TO ENHANCE YOUR WELL-BEING. ENJOY PREFERRED ACCESS TO AMENITIES & SPECIAL OFFERS ON TREATMENTS

MASSAGE MEMBERSHIP

R10 000

- 11 X 60 Mins Massage
- Choose Between Swedish / Deep Tissue / Aromatherapy / Hotstone
- Free 60Mins Massage On Your Birthday
- 10% Off Additional Services On the Day Of Your Massage
- Free Access To The Salt Room With Every Massage Service

Valid For A Year

ISCLINICAL FIRE & ICE MEMBERSHIP

R15 000

- 11 X Isclinical Fire & Ice Facials
- Free Oxygen Therapy With Every Treatment
- Free Signature Pedicure On Your Birthday
- 10% Off Additional Services On the Day Of Your Fire & Ice Facial
- Free Access To The Salt Room With Every ISclinical Service

Valid For A Year

VIP MEMBERSHIP

R20 000

- Credit Of R22 500 To Use On Treatments
- Free Access To Our Sauna and Salt Room
- 2 Salt Room Vouchers For Your Guest
- Complimentary 60 Mins Aromatherapy Massage On Your Birthday
- Purchase Vouchers On Your Account
- Use Your Account To Spoil A Friend

Valid For A Year



SPA ETIQUETTE

ARRIVAL GUIDELINES

Please arrive 20 minutes prior to the start of your scheduled appointment to allow yourself time to use facilities. Late arrivals will be subject to reduced treatment times.

MINIMUM AGE

The appropriate age for guests is 12 years of age and older.

FACILITY FEE

Use of The Spa requires a daily fee. For those with a reserved spa treatment there are no additional charges for spa facility use on the day of service.

WHAT TO WEAR

Robes and slippers are provided for your convenience.

CODE OF CONDUCT

The View Spa requires appropriate and respectful interactions between our guests and employees. The Company reserves the right to trespass anyone exhibiting behavior, language, or clothing that, at our discretion, is inconsistent with the Company's behavior standards.

MEDICAL CONCERNS AND COMFORT LEVEL

Guests who are pregnant, have had recent surgery, or have any other medical concerns are advised to consult their physician before booking spa services.

CANCELLATIONS

As a courtesy to all, we ask that a 24 hour notice be given if you need to cancel or change your appointment. For a cancellation with less than a 24-hour notification, guests will be charged 50 percent of the treatment fee. For no-show appointments, the full treatment fee will be charged.



THE VIEW



+27(0) 10 226 9120

RADISSON BLU HOTEL, 10TH FLOOR RIVONIA ROAD & DAISY STREET SANDTON, 2196
@THE_VIEW_BY_27PINKX

www.theviewspa.com