



AS COMMITTED AS YOU ARE

MEETINGS AT RADISSON BLU
HOTEL & SPA, LIMERICK

EXPERIENCE
MEETINGS

radissonblu.com/hotel-limerick

WELCOME

The iconic Radisson Blu Hotel & Spa, Limerick sits on 20 acres of parkland and offers beautiful views of the Woodcock Mountains. With a sophisticated design, modern meeting facilities and delivering exceptional services, Radisson Blu Hotel & Spa is the first choice for meetings and events in Limerick.

7

MEETING ROOMS
OVER 1000 SQM

750

MEETING DELEGATES
- MAXIMUM CAPACITY OF THE
LARGEST FUNCTION ROOM
(THEATRE STYLE)

154

BEDROOMS INCLUDING:
STANDARD, SUPERIOR, FAMILY,
BUSINESS CLASS ROOMS,
JUNIOR & EXECUTIVE SUITES

MEETING FACILITIES

EXPERIENCE MEETINGS – All the ingredients for a successful meeting

With Experience Meetings at Radisson Blu Hotel & Spa Limerick, we know what makes a successful meeting and event. We have highly trained and experienced staff to help you achieve your goals, free high speed internet access, and rewards with our Club Carlson for Planners program. We feed bright ideas with exceptional food and drink.

Our Yes I Can! Service Philosophy - we are committed to achieving the best for you and aim for 100% guest satisfaction.

- ✓

7 flexible function rooms
- ✓

Maximum capacity of 750 delegates in theatre style
- ✓

Modern and spacious pre-conference areas
- ✓

Free high-speed Internet for all meeting delegates
- ✓

Natural daylight in most meeting rooms
- ✓

Fully equipped business centre
- ✓

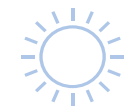
In-built audio visual equipment
- ✓

All meeting rooms located on the lower ground floor

PACKAGES

Based on our wide experience of hosting all types and sizes of meetings and events, we have developed bespoke solutions and packages to perfectly meet your specific needs.

We have removed all the stress from event planning, by creating unique package options for you to choose from:



Competitive rates
for day meetings



Outstanding
24-hour events



Elite Sports Training Facility.
Bespoke packages for sports
groups, team meeting
rooms, physio rooms, gym,
pool, assistance with pitch/
facility hire, team building
programmes



Social
events



Creative packages
for Christmas
Parties

Alternatively, bespoke packages can be built to suit your requirements.



MEET AND EAT


We believe in creating great tasting, seasonal and nutritionally balanced menus for meetings and conferences. Our dedicated team will customise an exquisite menu for your reception, themed party, gala dinner or any other events you have taking place.

Our innovative Brain Food option is ‘refuelling’ at its best. The thought is that when we eat the right food, we can improve the efficiency of our brain. We can enhance our ability to concentrate and increase our mental capacity, at the same time as lowering stress levels — all the right ingredients for a successful meeting. We serve Brain Food throughout the meeting day, to offer fresh, locally-sourced nourishment and keep the creative juices flowing.


BEDROOMS

Our bedrooms are designed to provide an exceptional guest experience by blending style with all the added little touches for the business traveller.


- ✓ 154 rooms and suites
- ✓ 24-hour room service
- ✓ Tea and coffee making facilities
- ✓ “This Works®” bespoke bathroom amenities
- ✓ Business Class rooms include: Super Breakfast Buffet, bathrobe, slippers, turndown service, Newspaper Delivery, Nespresso coffee machine
- ✓ Access to the fully equipped Rain Spa & Leisure Centre with fitness, gym, 12m pool, thermal suite and outdoor hot tub




FREE
INTERNET



GRAB
& RUN



SUPER
BREAKFAST



3 HOUR EX
LAUNDRY

RESTAURANTS & BARS

Radisson Blu Hotel & Spa, Limerick offers great dining options. Porters Restaurant offers a rich menu including traditional Irish and international contemporary dishes, all prepared with the best ingredients. Refresh with delicious drinks at the Quench Bar and enjoy a great selection of light snacks and cocktails at The Lobby Bar.

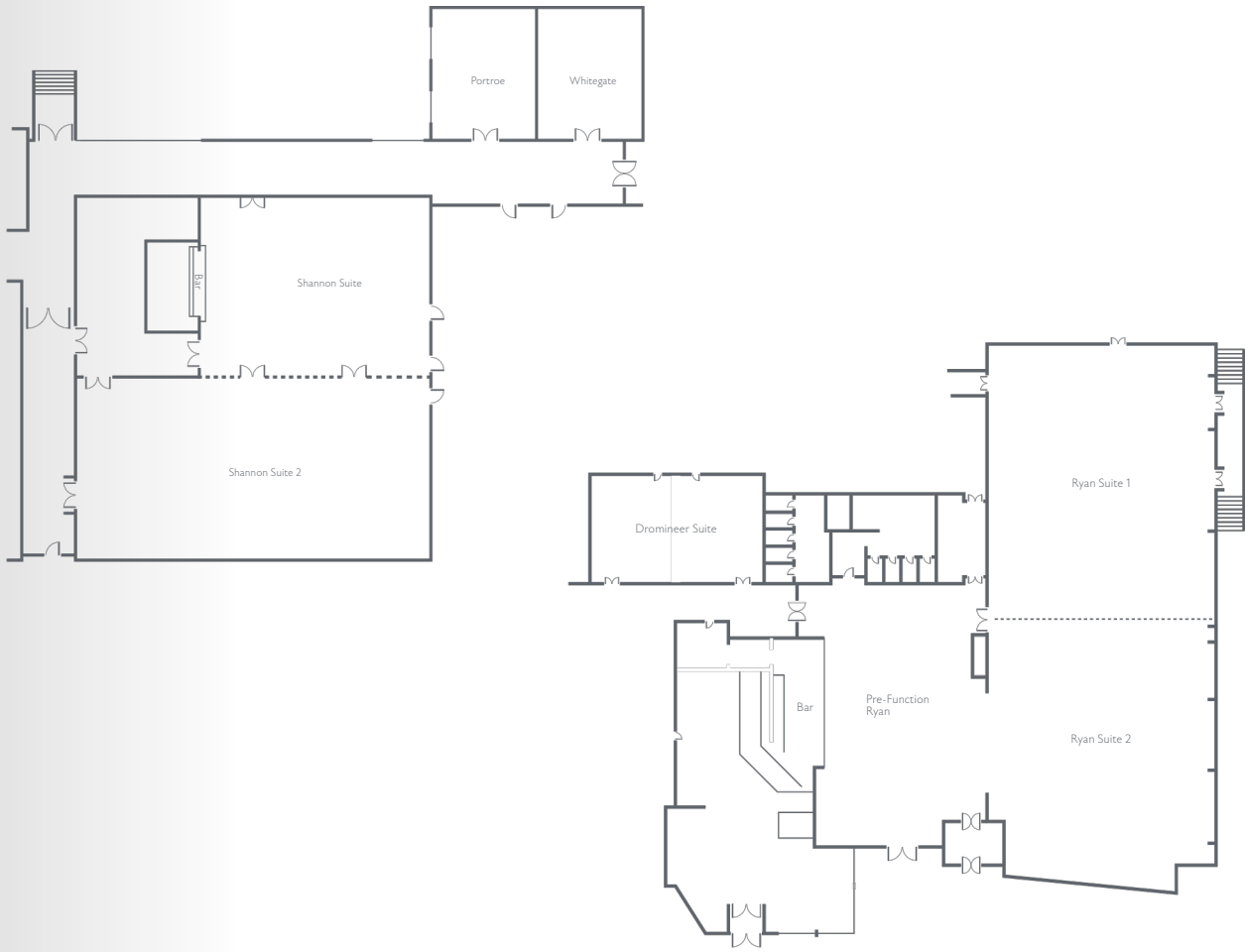


Radisson Rewards for Business, the new name in rewards for professionals.

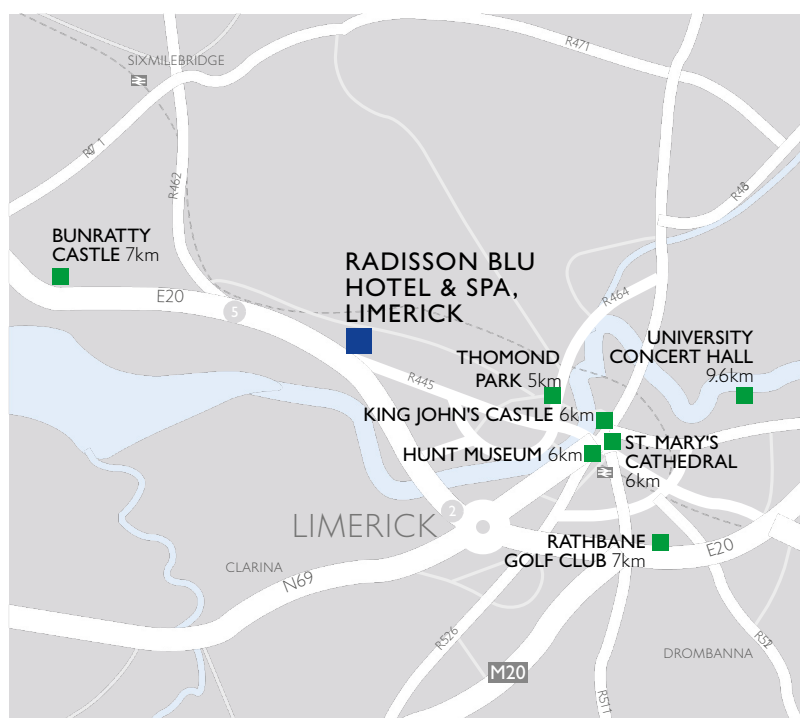
Join to earn 5 Gold Points per dollar spent for event purchases, for every meeting or event confirmed at Radisson Blu Hotel & Spa, Limerick or any of our participating Radisson Hotel Group hotels across the world.

Members points can be redeemed for a wide selection of rewards:

Gift Cards, Free Award Nights, Airline Miles and more.



MEETING ROOMS CAPACITY CHART												
	Board Room	Theatre Style	Class Room	U Shape	Banquet Reception /dancefloor	10's w/stage	Cabaret 8's	Ceiling Height	Length & Width M	Floor M Height	Door Area	Door Width
Ryan Suite 1 & 2	140	650	250	120	420	800	360	3.2	34.1 x 14.3	487.63	2.25	1.54
Ryan Suite 1	80	300	130	70	200	400	160	3.2	18.1 x 14.3	258.83	2.25	1.54
Ryan Suite 2	60	275	130	50	200	400	152	3.2	16 x 14.3	228.8	—	—
Ryan Pre Function Only	—	—	—	—	—	—	—	3.2	16.6 x 8.1	134.46	2.25	1.54
Total Ryan 1+2 with pre conference	—	750	—	—	—	—	—	3.2	—	622.09	—	—
Dromineer	30	75	30	30	48 (4 x 12's)	50	32	2.8	11.2 x 6.2	69.44	2.25	1.54
Portroe	15	30	20	20	n/a	n/a	n/a	2.8	6.5 x 4.85	31.53	2.25	1.71
Whitegate	15	30	20	20	n/a	n/a	n/a	2.8	6.5 x 4.85	31.53	2.25	1.71
Shannon 1	35	90	35	30	60	100	48	3.1	8.5 x 16.9	94.35	2.25	1.52
Shannon 2	40	160	55	45	120	160	80	x 8.1		136.89	2.25	1.52
Shannon Total	n/a	250	n/a	n/a	180	260	128	3	28 x 16.5	231.24	2.25	1.52



LOCATION

Getting to Radisson Blu Hotel & Spa, Limerick just couldn't be easier for you and your meeting delegates. Set outside the hustle and bustle of Limerick city centre, our hotel is easily accessible by train, bus, car or plane. The hotel is also in close proximity to top tourist attractions including Bunratty Castle and Folk Park, King John's Castle, Cliffs of Moher and Thomond Park.

TRANSPORT LINKS

By car:

93km from Galway, via N18
 109km from Cork, via N20
 120km from Killarney, via N21
 214km from Dublin, via M7

By train:

11 minute drive from Colbert Station, Parnell St, Limerick
 Trains run to and from Dublin daily.

By bus: Bus Eireann provides daily bus services to and from all parts of the country

By plane: SShannon Airport – 14km, via N18

Exit 4 off dual carriageway. Take 1st exit at roundabout and the hotel is located just on your right

PARKING

Extensive complimentary car parking available

RADISSON BLU HOTEL & SPA, LIMERICK

Ennis Road, Limerick, Ireland. Eircode V94 YA2R

Tel: +353 61 456200 Email: sales.limerick@radissonblu.com
radissonblu.ie/hotel-limerick

GPS Coordinates – 52.685007/-8.708918