

MEETINGS MADE EASY

ZURICH AIRPORT

FEEL THE DIFFERENCE
radissonblu.com/meetings

WELCOME

Welcome to Zurich's only hotel with direct access to the airport terminals and train station. This business and lifestyle hotel features avant-garde design and provides facilities for conventions, conferences, receptions and gala dinners.

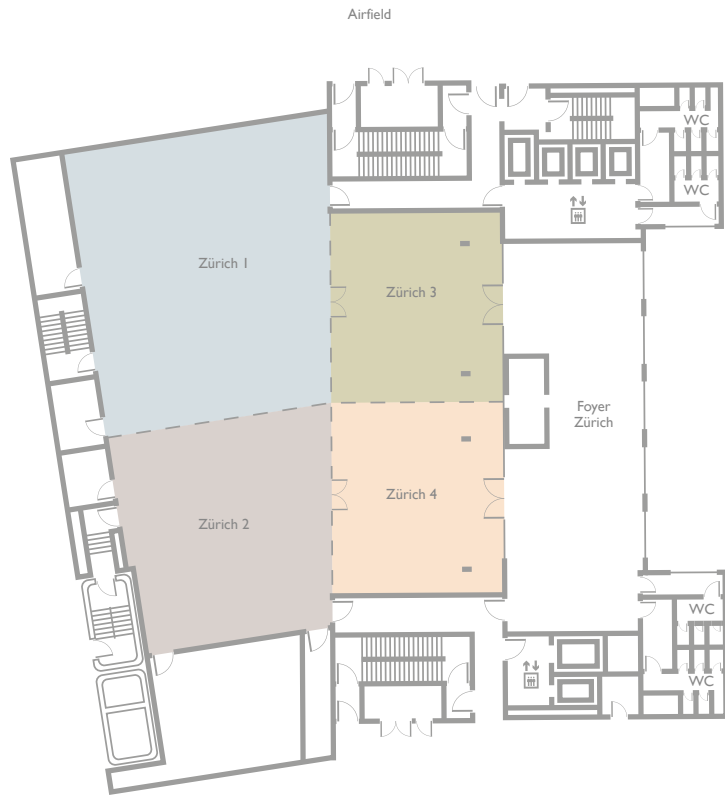
The centerpiece of the spacious atrium lobby is the world's tallest wine tower at 16 meters, which can hold up to 4,000 bottles of wine and champagne.

Spanning an area of more than 4,200m², the Radisson Blu Hotel, Zurich Airport is Switzerland's largest convention and congress hotel. The infrastructure consists of 52 multi-functional meeting rooms for any event from 2 – 600 participants.

All meeting delegates and hotel residents enjoy free high speed internet access in the entire hotel.



1ST FLOOR



7TH FLOOR



MEETING ROOM CAPACITY 7TH FLOOR

MEETING ROOM	m ²	Width x Length	Height	Theatre	Classroom	Cabaret	Banquet	U-shape	Boardroom	Cocktail	Natural
light	116	7.80 × 14.90	2.55	90	53	48	64	35	33	80	✓
St. Gallen	115	7.80 × 14.80	2.55	90	56	48	64	35	33	80	✓
Uri	57	7.80 × 7.30	2.55	40	24	18	32	18	17	40	✓
Zug	49	6.00 × 8.20	2.55	35	20	18	24	15	15	30	✓
Jura 1	87	7.80 × 11.10	2.55	65	56	30	48	24	23	50	✓
Jura 2	58	7.80 × 7.40	2.55	35	24	24	32	18	17	40	✓
Jura 1+2	145	7.80 × 18.50	2.55	100	80	60	80	48	39	150	✓
Schwyz	58	7.30 × 7.90	2.55	40	24	18	32	18	17	40	✓
Unterwalden	58	7.30 × 7.90	2.55	40	24	18	32	18	17	40	✓
Graubünden	64	8.00 × 8.00	2.55	50	32	24	32	21	17	40	✓
Aargau	54	11.10 × 4.90	2.55	35	24	18	24	21	21	40	✓
Appenzell	32	7.90 × 4.00	2.55	20	12	12	-	13	15	25	✓
Tessin	85	7.90 × 10.80	2.55	65	45	30	48	24	25	50	✓
Bern 1	88	7.90 × 11.10	2.55	65	45	30	48	24	25	50	✓
Bern 2	88	7.90 × 11.10	2.55	65	48	30	48	24	25	50	✓
Bern 3	58	7.90 × 7.30	2.55	40	24	18	32	18	17	40	✓
Bern 1+2	176	7.90 × 22.20	2.55	130	90	60	96	60	56	180	✓
Bern 2+3	146	7.90 × 18.40	2.55	105	72	48	80	42	39	150	✓
Bern 1-3	234	7.90 × 29.50	2.55	170	117	78	128	78	79	245	✓
Basel 1	88	11.10 × 7.90	2.55	65	53	30	48	24	23	50	✓
Basel 2	58	7.30 × 7.90	2.55	35	24	24	32	18	17	40	✓
Basel 1+2	146	18.40 × 7.90	2.55	100	77	60	80	48	39	150	✓

BOARD MEETINGS (8TH FLOOR)

The 8th floor consists of 27 individually designed Board Rooms, two multi-functional meeting rooms, a fully equipped video conference room, four business lounges, three guest offices, two executive day rooms and a Business Service Center.

This level is directly connected to the hotel's own parking spaces in 'Parkhaus I'. Enjoy breathtaking views from the terrace of the Airfield Lounge, making your stay unforgettable.



CONFERENCE CENTER

The hotel's Conference Center located on floors 1, 7 and 8 consists of extensive facilities from hourly to multi-day business events. These include 52 meeting rooms, four foyers, four lounges (two with balconies), one video conference room, three guest offices, two executive day rooms and two Business Service Centers. Our ballroom 'Zürich' is located on the the first floor and can be divided into four parts. Our in-house partner 'KFP Five Star Conference Services' provides comprehensive technical support. This ranges from basic set-up to extensive lighting, visual and sound effects for any technical requirement.

RADISSON REWARDS FOR BUSINESS

Experience a new world with Radisson Rewards™ for Business designed for our professional partners – Travel Agents, Meeting and Event Planners and Executive Assistants – members get rewarded for bookings at any of our more than 1,100 hotels worldwide, including: Radisson Collection, Radisson Blu®, Radisson®, Radisson RED, Park Plaza®, Park Inn® by Radisson, Country Inn & Suites® by Radisson, and prizeotel. Members enjoy exclusive opportunities to earn and redeem for a wide selection of gift cards, award night stays, airline miles and more.



ROOMS & WELLNESS FACILITIES

The 330 guest rooms and suites are decorated in four different styles: 'At Home', 'Fresh', 'Chic' and the One Bedroom Suite design 'Charme', designed by Matteo Thun, George Nelson, Cassina and the Castiglioni brothers. Guests experience the comfort of a modern business hotel, including a flat screen TV, free high-speed WiFi internet access and a laptop sized safe with an integrated power socket.

Exciting views of the airport, Swiss mountains or the Wine Tower create a stunning hotel room ambience. Quadruple glazing and soundproof windows ensure a tranquil stay.

The PACE Fitness Club offers high-tech cardio equipment such as a treadmill, bike, cross trainer, as well as light-weight equipment to ensure an efficient workout.

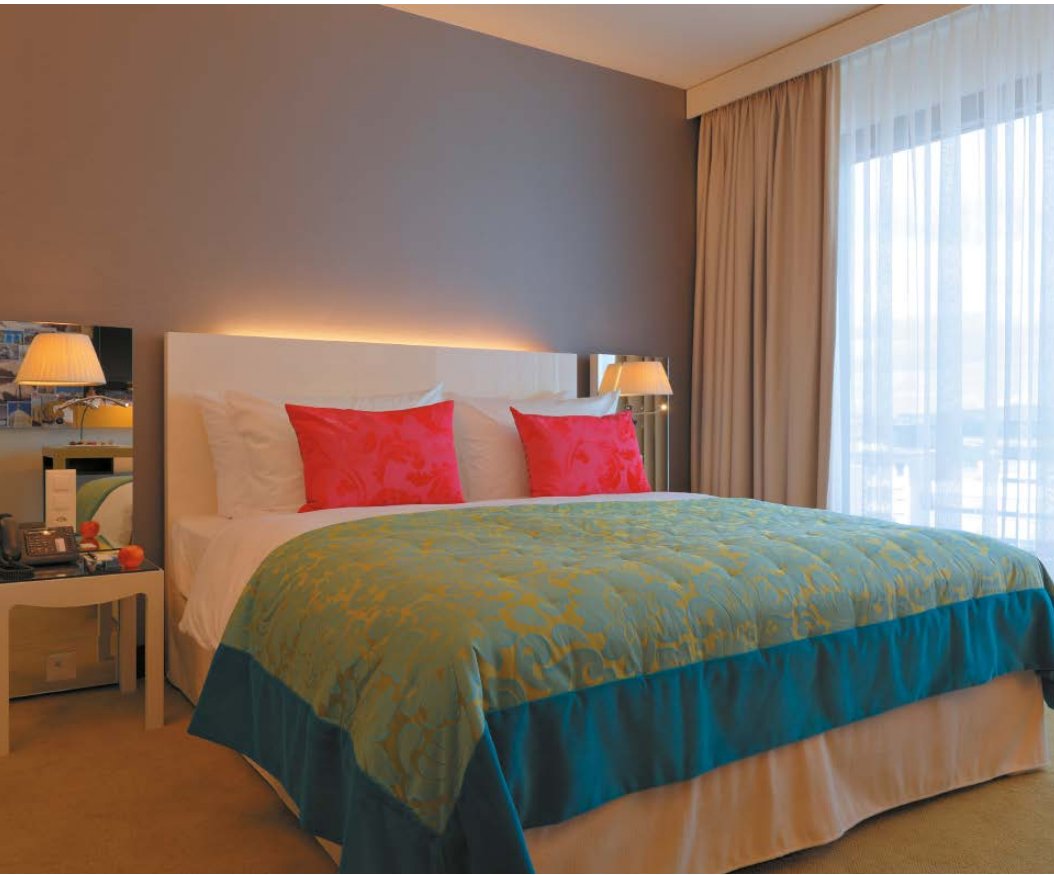
The fitness room offers fascinating views of the atrium lobby and the Wine Tower and includes a sauna, steam bath and a relaxation room.

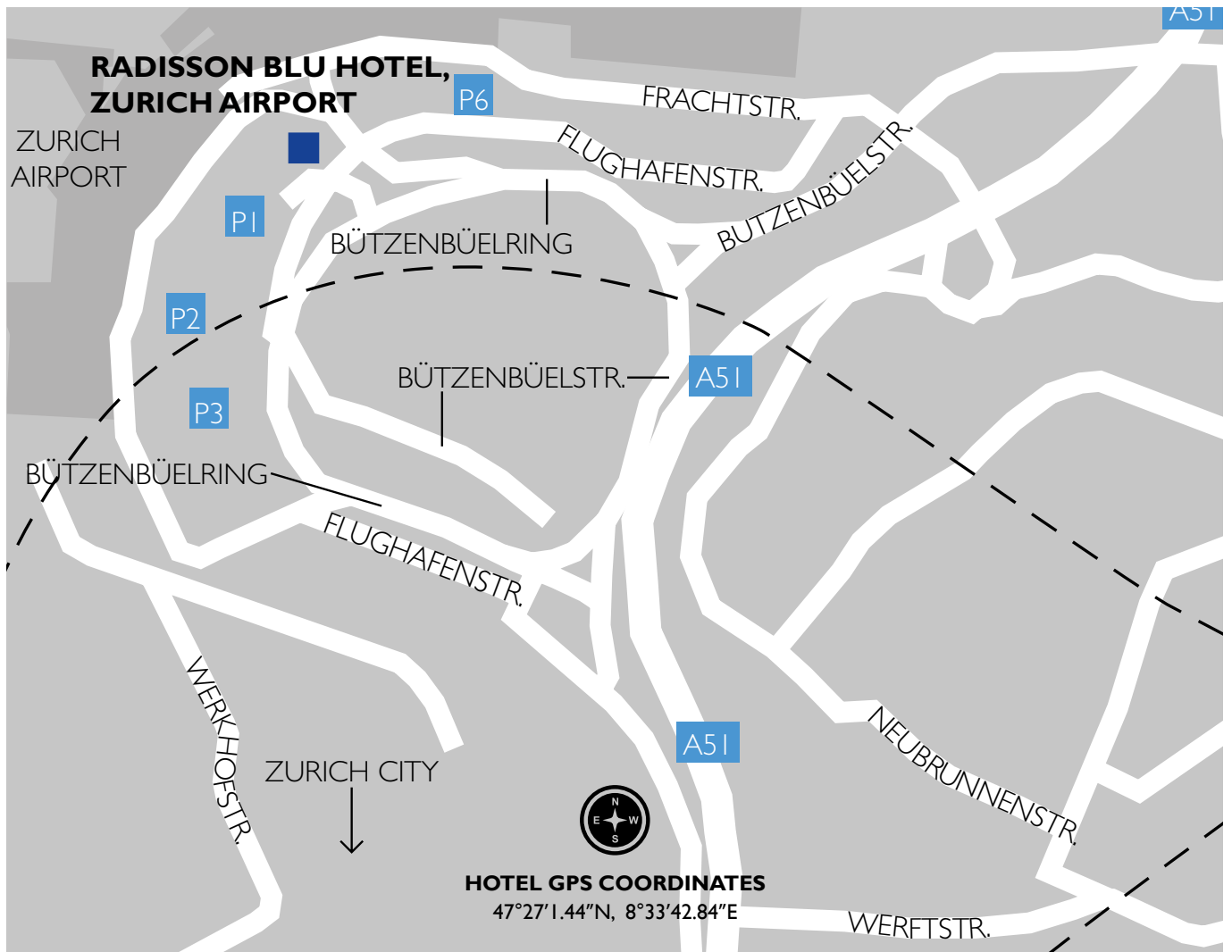
WORLD OF GASTRONOMY

Modern interpretations of Italian classics and an atmosphere reflecting the 'Dolce Vita' of our southern neighbour await you in the Filini Restaurant. In the mornings, the Super Breakfast Buffet offers a broad selection of tempting hot and cold meals.

First class meat and fish specialities, an open show-kitchen, 'Alpine Chic' architecture and a clear view of the Wine Tower make the angels' wine tower grill a gastronomic experience for all senses.

During the summer months one can enjoy a rich assortment of food and beverages at the outdoor venue Giardino Blu – a part of the Filini Restaurant and the only outside terrace at Zurich Airport.





ARRIVAL

Travelling by car: From all directions, change from the A1 onto the A51 in the direction of the Airport at the 'Zürich Nord' intersection. At the 'Flughafen' / Airport exit, leave the A51 and follow the signs to the multi-storey car parks (Parkhaus). 'Parkhaus 1' is located right next to the hotel. We offer our guests on-site parking spaces on level 8 of 'Parkhaus 1' with direct access to the 8th floor of our hotel.

Travelling by plane: The hotel is directly connected to Zurich International Airport and located opposite the terminals (arrival level). Follow the signs and it will take you approximately two minutes walking distance from the baggage drop to the hotel.

Travelling by train: The journey from Zürich HB (Main Station) to Zürich Flughafen (Zurich Airport) takes approximately ten minutes. The hotel is located within a few minutes walking distance from the station.

RADISSON BLU HOTEL, ZURICH AIRPORT

P.O. Box 295, 8058 Zurich Airport, Switzerland
T: +41 (0) 44 800 40 40 F: +41 (0) 44 800 40 50
info.zurich@radissonblu.com
radissonblu.com/hotel-zurichairport